

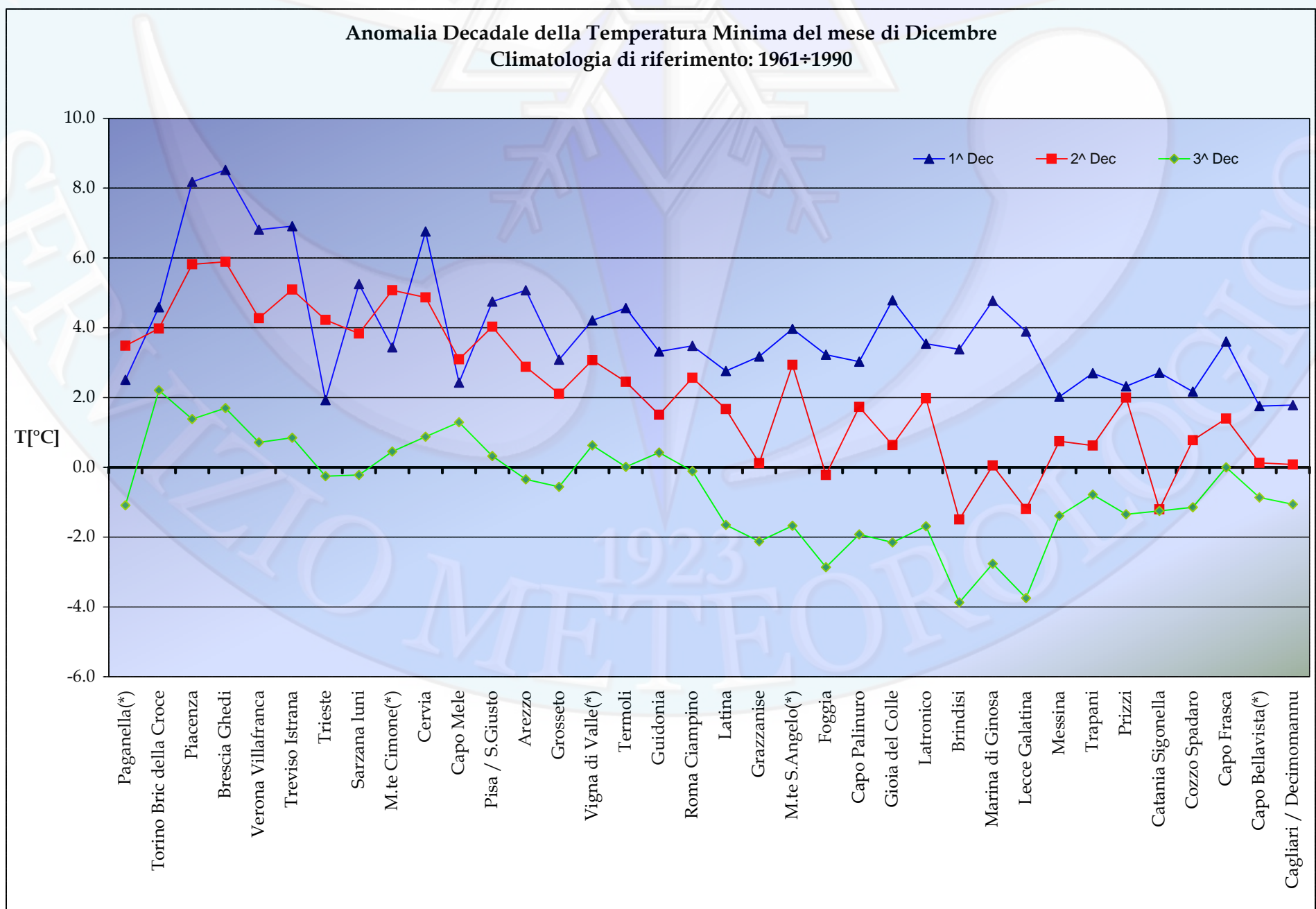
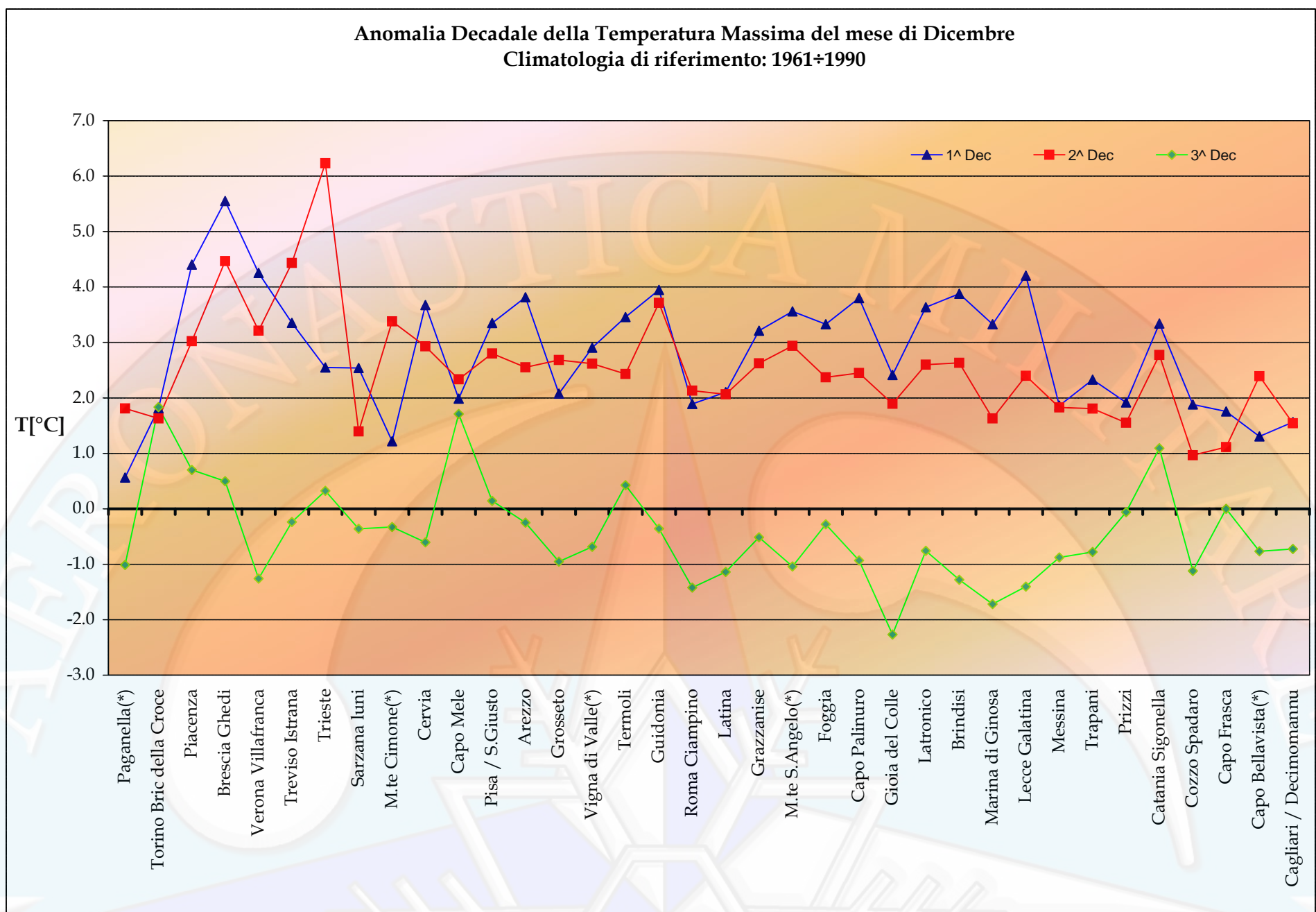
Anomalie Termico/Pluviometriche rispetto al CliNo principale 61-90**Thermo-Pluviometric anomalies vs CliNo 61-90**

Stazioni	Dicembre '14 December '14	Tmax Media Average °C Clino 61-90	Anomalia Anomaly	Tmin Media Average °C Clino 61-90	Anomalia Anomaly	Precipitazione Tot. Precipitation mm. Clino 61-90	Anomalia Anomaly
Paganella(*)	1^ Decade	-0.8	0.6	-5.8	2.5	9	37
	2^ Decade	-1.2	1.8	-6.5	3.5	9	0
	3^ Decade	-1.5	-1.0	-6.4	-1.1	9	-7
Torino Bric della Croce	1^ Decade	6.7	1.8	1.2	4.6	10	42
	2^ Decade	6.5	1.6	0.8	4.0	10	4
	3^ Decade	5.4	1.8	0.1	2.2	10	-10
Piacenza	1^ Decade	6.2	4.4	-1.0	8.2	23	25
	2^ Decade	5.2	3.0	-1.7	5.8	23	-4
	3^ Decade	4.3	0.7	-2.2	1.4	23	-15
Brescia Ghedi	1^ Decade	6.3	5.6	-0.9	8.5	18	50
	2^ Decade	5.0	4.5	-1.7	5.9	18	17
	3^ Decade	4.3	0.5	-2.1	1.7	18	-17
Verona Villafranca	1^ Decade	7.3	4.3	-0.5	6.8	17	13
	2^ Decade	5.6	3.2	-1.5	4.3	17	5
	3^ Decade	5.3	-1.3	-1.6	0.7	17	-6
Treviso Istrana	1^ Decade	8.6	3.4	-0.5	6.9	20	26
	2^ Decade	7.2	4.4	-1.1	5.1	20	-1
	3^ Decade	6.7	-0.2	-1.3	0.9	20	-13
Trieste	1^ Decade	9.0	2.5	5.0	1.9	31	5
	2^ Decade	8.3	6.2	4.3	4.2	31	-28
	3^ Decade	7.7	0.3	3.9	-0.3	31	-19
Sarzana Iuni	1^ Decade	12.7	2.5	4.6	5.2	40	n.a.
	2^ Decade	12.0	1.4	3.9	3.8	40	n.a.
	3^ Decade	11.4	-0.4	3.9	-0.2	40	n.a.
M.te Cimone(*)	1^ Decade	-0.5	1.2	-5.2	3.4	18	25
	2^ Decade	-0.8	3.4	-5.0	5.1	18	-17
	3^ Decade	-1.0	-0.3	-5.5	0.5	18	-5
Cervia	1^ Decade	8.1	3.7	1.3	6.8	18	49
	2^ Decade	7.4	2.9	0.1	4.9	18	-4
	3^ Decade	6.5	-0.6	-0.1	0.9	18	13
Capo Mele	1^ Decade	13.3	2.0	7.9	2.4	22	31
	2^ Decade	12.8	2.3	7.7	3.1	22	-4
	3^ Decade	11.9	1.7	7.0	1.3	22	-21
Pisa / S.Giusto	1^ Decade	12.1	3.3	3.4	4.8	28	46
	2^ Decade	11.4	2.8	2.9	4.0	28	-12
	3^ Decade	10.9	0.1	2.6	0.3	28	5
Arezzo	1^ Decade	9.7	3.8	1.6	5.1	24	8
	2^ Decade	9.1	2.6	0.8	2.9	24	-17
	3^ Decade	8.6	-0.2	0.6	-0.3	24	-8
Grosseto	1^ Decade	13.0	2.1	4.4	3.1	22	-6
	2^ Decade	12.7	2.7	3.5	2.1	22	-18
	3^ Decade	12.2	-1.0	3.3	-0.6	22	-10
Vigna di Valle(*)	1^ Decade	11.2	2.9	5.4	4.2	39	38
	2^ Decade	10.6	2.6	4.8	3.1	39	-1
	3^ Decade	10.2	-0.7	4.5	0.6	39	-13
Termoli	1^ Decade	12.4	3.5	7.8	4.6	14	13
	2^ Decade	12.3	2.4	7.3	2.5	14	-11
	3^ Decade	11.1	0.4	6.7	0.0	14	6
Guidonia	1^ Decade	13.9	3.9	3.6	3.3	29	49
	2^ Decade	13.3	3.7	3.2	1.5	29	-5
	3^ Decade	12.9	-0.4	2.8	0.4	29	-7
Roma Ciampino	1^ Decade	13.2	1.9	4.3	3.5	37	52
	2^ Decade	12.5	2.1	3.9	2.6	37	-12
	3^ Decade	12.2	-1.4	3.5	-0.1	37	-20

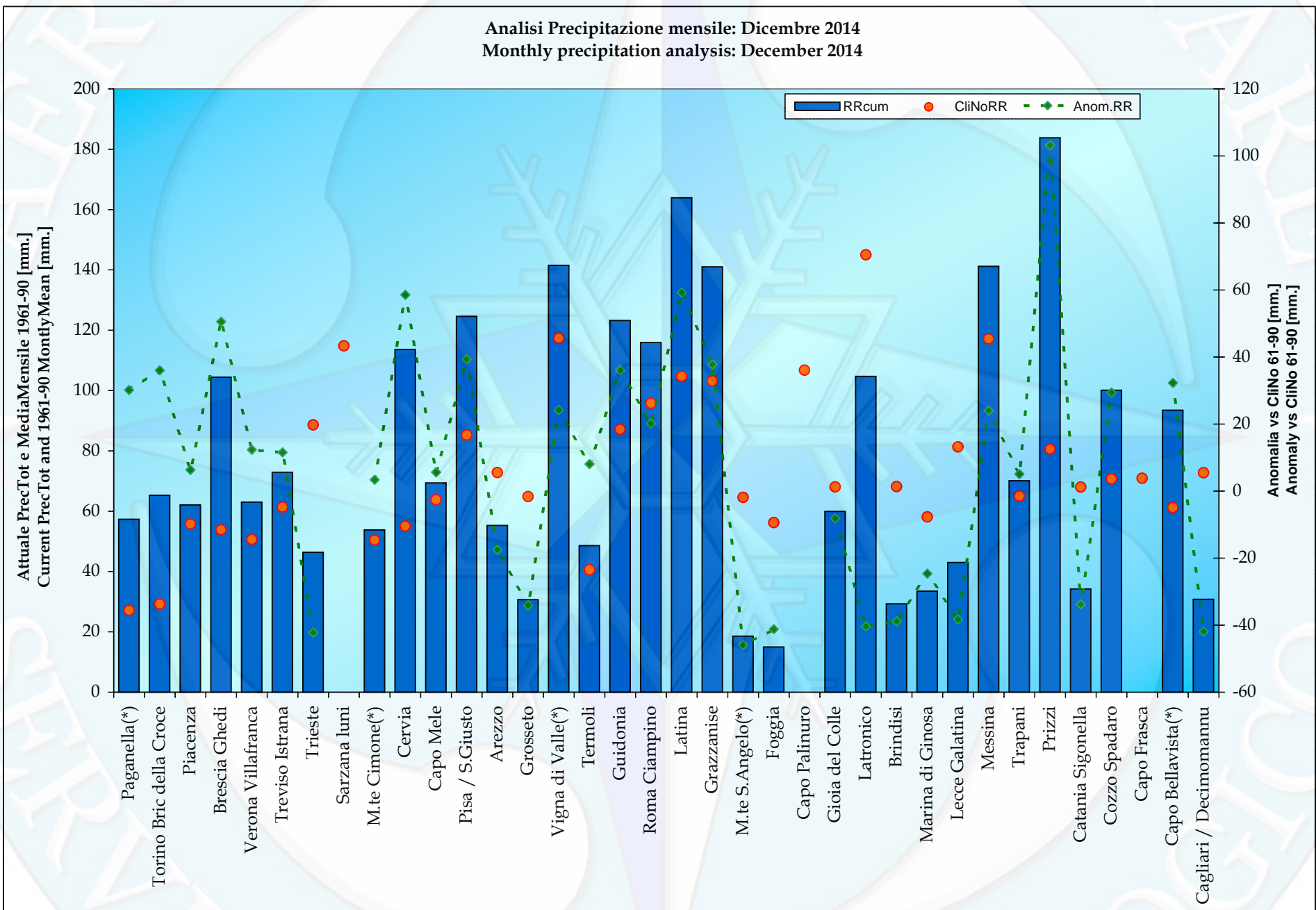
<i>Anomalie Termico/Pluviometriche rispetto al CliNo principale 61-90</i>							
<i>Thermo-Pluviometric anomalies vs CliNo 61-90</i>							
Stazioni	Dicembre '14 December '14	Tmax Media Average °C Clino 61-90	Anomalia Anomaly	Tmin Media Average °C Clino 61-90	Anomalia Anomaly	Precipitazione Tot. Precipitation mm. Clino 61-90	Anomalia Anomaly
Latina	1^ Decade	15.1	2.1	5.2	2.8	35	82
	2^ Decade	14.4	2.1	4.6	1.7	35	-2
	3^ Decade	14.1	-1.1	4.5	-1.7	35	-21
Grazzanise	1^ Decade	14.2	3.2	5.1	3.2	34	61
	2^ Decade	13.7	2.6	4.6	0.1	34	1
	3^ Decade	13.2	-0.5	4.3	-2.1	34	-25
M.te S.Angelo(*)	1^ Decade	7.0	3.6	3.0	4.0	22	-17
	2^ Decade	7.2	2.9	2.8	2.9	22	-21
	3^ Decade	6.5	-1.0	2.4	-1.7	22	-9
Foggia	1^ Decade	13.2	3.3	4.6	3.2	19	-17
	2^ Decade	12.9	2.4	4.3	-0.2	19	-18
	3^ Decade	12.1	-0.3	3.7	-2.9	19	-7
Capo Palinuro	1^ Decade	14.7	3.8	9.2	3.0	36	n.a.
	2^ Decade	14.1	2.5	8.9	1.7	36	n.a.
	3^ Decade	13.7	-0.9	8.6	-1.9	36	n.a.
Gioia del Colle	1^ Decade	11.5	2.4	3.4	4.8	23	-5
	2^ Decade	11.0	1.9	3.3	0.6	23	-19
	3^ Decade	10.5	-2.3	2.9	-2.2	23	16
Latronico	1^ Decade	7.7	3.6	3.3	3.5	49	n.a.
	2^ Decade	7.4	2.6	3.1	2.0	49	-29
	3^ Decade	7.1	-0.8	2.8	-1.7	49	17
Brindisi	1^ Decade	14.6	3.9	8.1	3.4	23	-18
	2^ Decade	14.0	2.6	7.6	-1.5	23	-14
	3^ Decade	13.6	-1.3	7.3	-3.9	23	-7
Marina di Ginosa	1^ Decade	14.2	3.3	6.2	4.8	19	-11
	2^ Decade	14.0	1.6	6.1	0.1	19	-18
	3^ Decade	13.2	-1.7	5.4	-2.8	19	4
Lecce Galatina	1^ Decade	14.3	4.2	6.3	3.9	27	-24
	2^ Decade	13.8	2.4	6.0	-1.2	27	0
	3^ Decade	13.4	-1.4	5.6	-3.7	27	-14
Messina	1^ Decade	16.1	1.9	11.6	2.0	39	-8
	2^ Decade	15.8	1.8	11.4	0.7	39	-20
	3^ Decade	15.4	-0.9	11.1	-1.4	39	51
Trapani	1^ Decade	16.6	2.3	9.6	2.7	22	-1
	2^ Decade	16.3	1.8	9.6	0.6	22	-13
	3^ Decade	15.7	-0.8	8.9	-0.8	22	19
Prizzi	1^ Decade	8.5	1.9	3.8	2.3	27	19
	2^ Decade	8.2	1.6	3.4	2.0	27	3
	3^ Decade	7.9	-0.1	3.1	-1.3	27	82
Catania Sigonella	1^ Decade	17.0	3.3	6.9	2.7	23	-11
	2^ Decade	16.7	2.8	6.7	-1.2	23	-15
	3^ Decade	16.1	1.1	6.2	-1.2	23	-7
Cozzo Spadaro	1^ Decade	17.0	1.9	10.8	2.2	24	23
	2^ Decade	16.6	1.0	10.6	0.8	24	0
	3^ Decade	16.0	-1.1	10.4	-1.1	24	7
Capo Frasca	1^ Decade	14.9	1.8	8.7	3.6	24	29
	2^ Decade	14.5	1.1	8.9	1.4	24	-1
	3^ Decade	13.9		8.2		24	n.a.
Capo Bellavista(*)	1^ Decade	15.0	1.3	9.6	1.8	24	39
	2^ Decade	15.0	2.4	9.5	0.1	24	-4
	3^ Decade	14.2	-0.8	8.9	-0.9	24	-3
Cagliari/Decimomannu	1^ Decade	15.4	1.6	6.2	1.8	20	4
	2^ Decade	15.0	1.5	5.8	0.1	20	-24
	3^ Decade	14.5	-0.7	5.4	-1.1	20	-22

n.a.: non disponibile per dat insufficienti nel periodo in esame. - not available for data gaps in the reporting period.

(*)Stazioni aderenti al Programma WMO - GCOS (Global Climate Observation System)



Analisi Precipitazione mensile: Dicembre 2014
 Monthly precipitation analysis: December 2014



1923

METEOROLOGICO