

Anomalie Termico/Pluviometriche rispetto al CliNo principale 61-90**Thermo-Pluviometric anomalies vs CliNo 61-90**

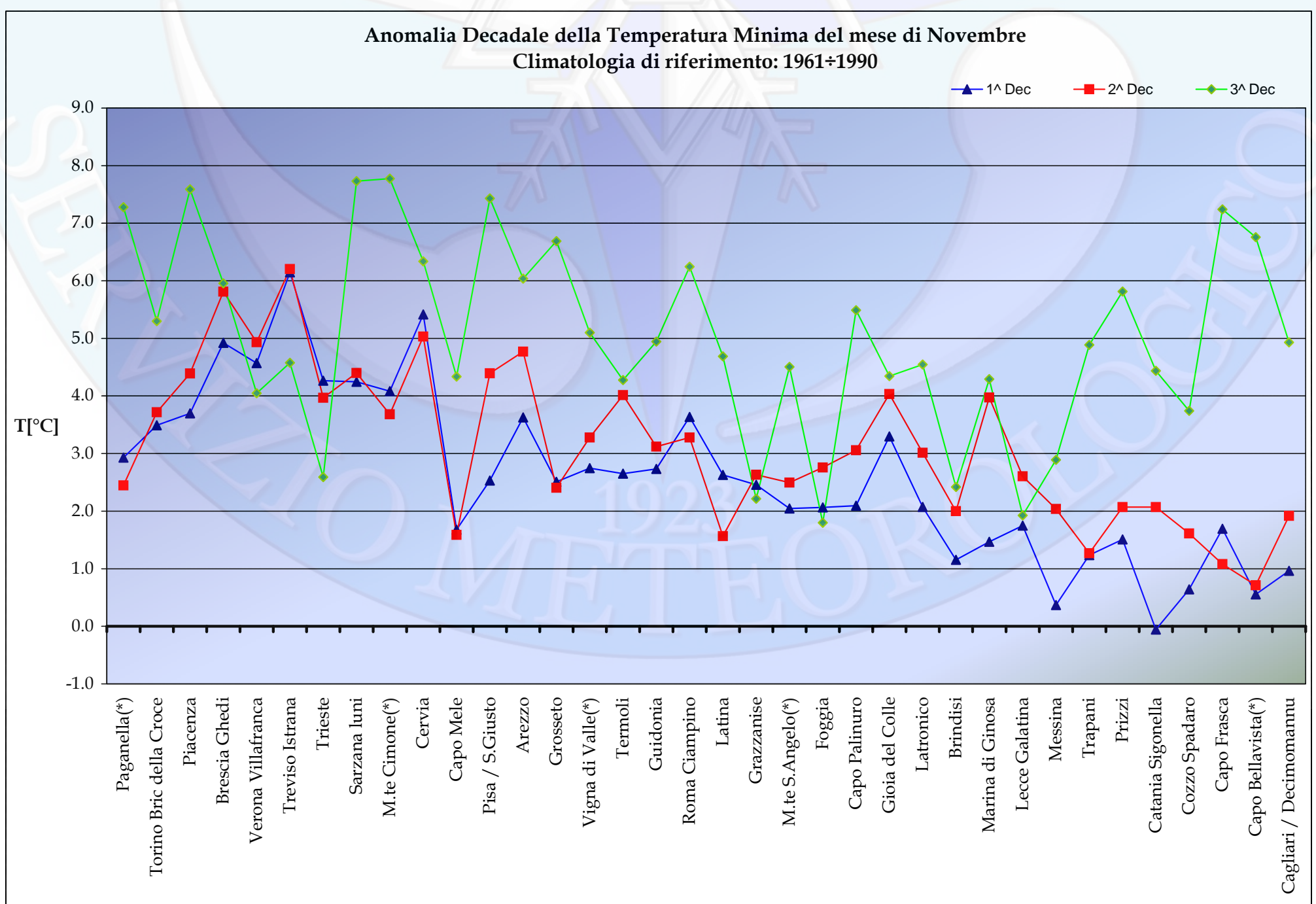
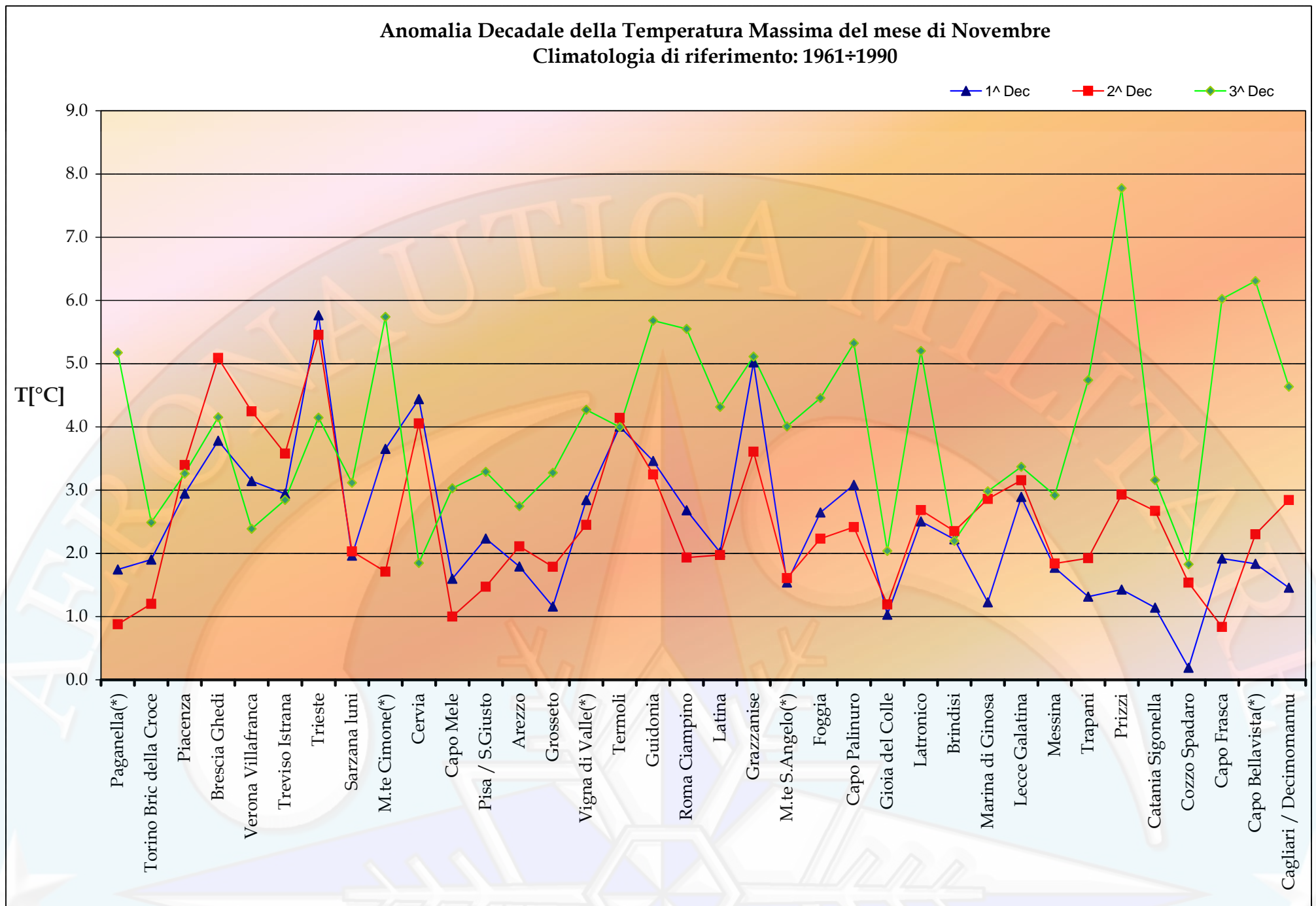
Stazioni	Novembre '14 November '14	Tmax Media Average °C Clino 61-90	Anomalia Anomaly	Tmin Media Average °C Clino 61-90	Anomalia Anomaly	Precipitazione Tot. Precipitation mm. Clino 61-90	Anomalia Anomaly
Paganella(*)	1^ Decade	2.8	1.7	-1.4	2.9	17	n.a.
	2^ Decade	0.6	0.9	-3.7	2.4	17	67
	3^ Decade	-0.4	5.2	-5.2	7.3	17	-3
Torino Bric della Croce	1^ Decade	10.3	1.9	5.3	3.5	17	36
	2^ Decade	8.9	1.2	3.6	3.7	17	85
	3^ Decade	7.1	2.5	2.0	5.3	17	58
Piacenza	1^ Decade	11.5	2.9	5.5	3.7	30	64
	2^ Decade	9.5	3.4	2.9	4.4	30	68
	3^ Decade	7.5	3.3	0.8	7.6	30	2
Brescia Ghedi	1^ Decade	12.7	3.8	5.5	4.9	26	113
	2^ Decade	10.2	5.1	3.1	5.8	26	20
	3^ Decade	8.2	4.2	0.6	6.0	26	-2
Verona Villafranca	1^ Decade	13.3	3.1	5.5	4.6	25	82
	2^ Decade	11.0	4.2	3.4	4.9	25	9
	3^ Decade	9.0	2.4	1.3	4.0	25	-16
Treviso Istrana	1^ Decade	14.3	2.9	5.2	6.1	33	44
	2^ Decade	12.2	3.6	3.4	6.2	33	74
	3^ Decade	10.1	2.8	1.3	4.6	33	-22
Trieste	1^ Decade	14.2	5.8	9.7	4.3	38	23
	2^ Decade	12.4	5.5	8.1	4.0	38	12
	3^ Decade	10.6	4.1	6.6	2.6	38	-21
Sarzana luni	1^ Decade	16.8	2.0	8.4	4.2	47	n.a.
	2^ Decade	15.3	2.0	7.1	4.4	47	n.a.
	3^ Decade	13.3	3.1	5.3	7.7	47	n.a.
M.te Cimone(*)	1^ Decade	3.3	3.7	-1.1	4.1	27	99
	2^ Decade	1.4	1.7	-2.6	3.7	27	9
	3^ Decade	0.3	5.7	-4.2	7.8	27	-11
Cervia	1^ Decade	13.8	4.4	5.9	5.4	26	-4
	2^ Decade	12.2	4.1	4.1	5.0	26	9
	3^ Decade	9.7	1.8	2.2	6.3	26	-11
Capo Mele	1^ Decade	16.7	1.6	11.5	1.7	23	80
	2^ Decade	15.5	1.0	10.2	1.6	23	160
	3^ Decade	13.7	3.0	8.5	4.3	23	44
Pisa/ S.Giusto	1^ Decade	17.3	2.2	7.9	2.5	41	97
	2^ Decade	15.6	1.5	6.2	4.4	41	29
	3^ Decade	13.5	3.3	4.2	7.4	41	-9
Arezzo	1^ Decade	15.5	1.8	5.1	3.6	31	30
	2^ Decade	13.4	2.1	3.6	4.8	31	45
	3^ Decade	11.3	2.7	2.0	6.0	31	-16
Grosseto	1^ Decade	18.1	1.2	8.5	2.5	31	-20
	2^ Decade	16.3	1.8	6.9	2.4	31	66
	3^ Decade	14.5	3.3	5.0	6.7	31	n.a.
Vigna di Valle(*)	1^ Decade	16.1	2.8	9.4	2.7	44	60
	2^ Decade	14.5	2.5	8.0	3.3	44	41
	3^ Decade	12.5	4.3	6.3	5.1	44	-4
Termoli	1^ Decade	17.0	4.0	11.9	2.7	15	-10
	2^ Decade	15.9	4.1	10.7	4.0	15	0
	3^ Decade	14.3	4.0	8.8	4.3	15	-13
Guidonia	1^ Decade	18.8	3.5	7.8	2.7	34	115
	2^ Decade	16.8	3.2	6.4	3.1	34	33
	3^ Decade	14.9	5.7	4.5	4.9	34	-9
Roma Ciampino	1^ Decade	18.2	2.7	8.4	3.6	43	92
	2^ Decade	16.3	1.9	7.0	3.3	43	30
	3^ Decade	14.3	5.5	5.1	6.2	43	-1

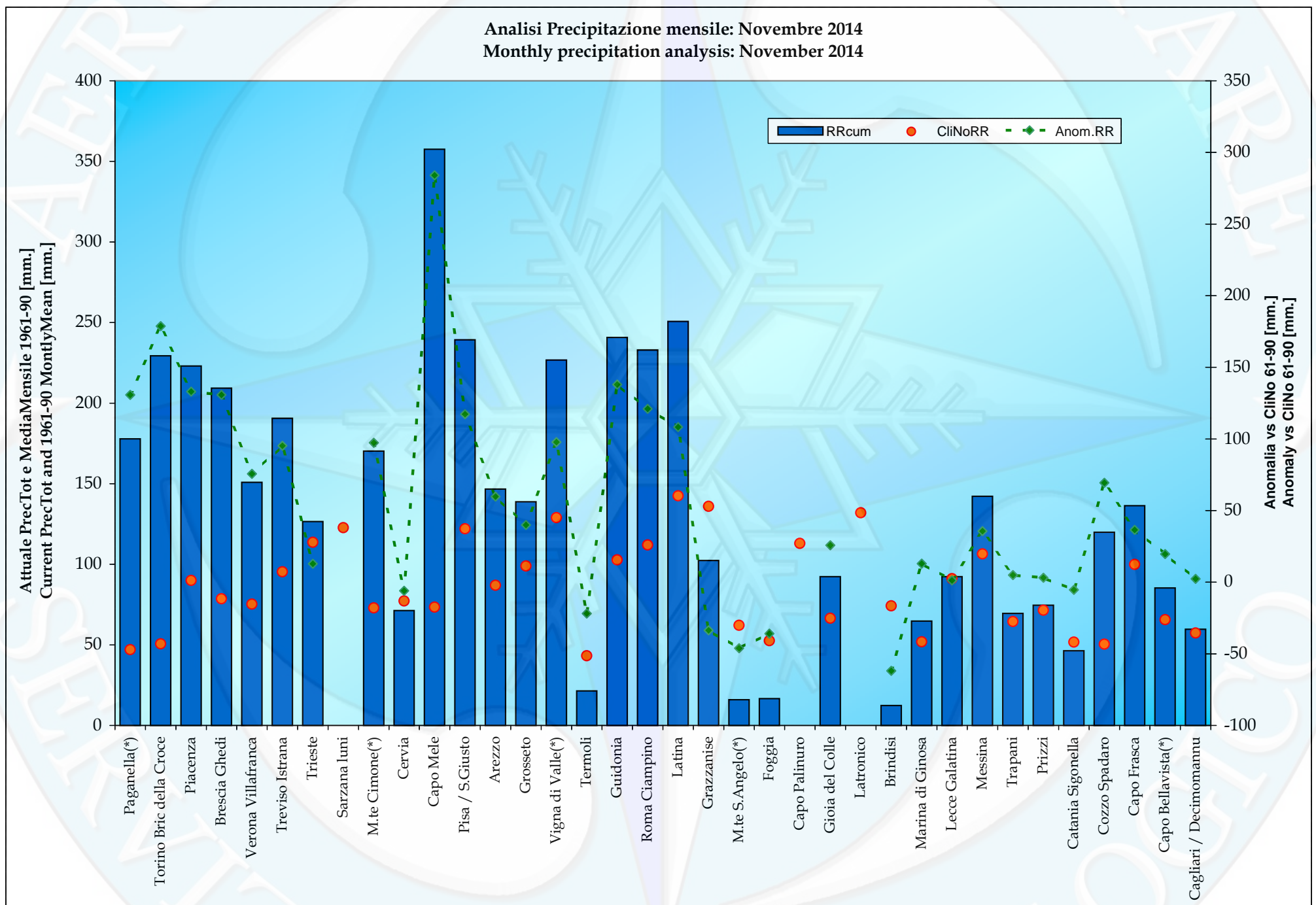
Anomalie Termico/Pluviometriche rispetto al CliNo principale 61-90**Thermo-Pluviometric anomalies vs CliNo 61-90**

Stazioni	Novembre '14 November '14	Tmax Media Average °C Clino 61-90	Anomalia Anomaly	Tmin Media Average °C Clino 61-90	Anomalia Anomaly	Precipitazione Tot. Precipitation mm. Clino 61-90	Anomalia Anomaly
Latina	1^ Decade	19.6	2.0	9.4	2.6	47	115
	2^ Decade	17.9	2.0	8.0	1.6	47	30
	3^ Decade	16.0	4.3	6.2	4.7	47	-37
Grazzanise	1^ Decade	18.9	5.0	8.8	2.5	45	-4
	2^ Decade	17.3	3.6	7.5	2.6	45	13
	3^ Decade	15.4	5.1	5.9	2.2	45	-43
M.te S.Angelo(*)	1^ Decade	12.2	1.5	7.2	2.0	21	-10
	2^ Decade	10.4	1.6	5.9	2.5	21	-16
	3^ Decade	8.4	4.0	4.0	4.5	21	-20
Foggia	1^ Decade	18.4	2.6	8.5	2.1	18	-9
	2^ Decade	16.8	2.2	7.3	2.8	18	-10
	3^ Decade	14.7	4.5	5.2	1.8	18	-17
Capo Palinuro	1^ Decade	19.0	3.1	13.2	2.1	38	n.a.
	2^ Decade	17.4	2.4	11.9	3.1	38	n.a.
	3^ Decade	15.6	5.3	10.0	5.5	38	n.a.
Gioia del Colle	1^ Decade	16.1	1.0	7.1	3.3	22	54
	2^ Decade	14.7	1.2	6.2	4.0	22	-8
	3^ Decade	12.8	2.0	4.1	4.3	22	-21
Latronico	1^ Decade	12.7	2.5	7.5	2.1	44	-3
	2^ Decade	10.8	2.7	6.1	3.0	44	10
	3^ Decade	9.2	5.2	4.3	4.5	44	n.a.
Brindisi	1^ Decade	18.7	2.2	11.9	1.2	25	-24
	2^ Decade	17.4	2.4	10.7	2.0	25	-18
	3^ Decade	16.0	2.2	9.0	2.4	25	-21
Marina di Ginosa	1^ Decade	18.3	1.2	10.0	1.5	17	6
	2^ Decade	17.2	2.9	9.0	4.0	17	24
	3^ Decade	15.7	3.0	7.0	4.3	17	-17
Lecce Galatina	1^ Decade	18.7	2.9	10.1	1.8	30	8
	2^ Decade	17.6	3.2	9.4	2.6	30	17
	3^ Decade	15.8	3.4	7.4	1.9	30	-24
Messina	1^ Decade	20.1	1.8	15.2	0.4	36	54
	2^ Decade	18.9	1.8	14.2	2.0	36	17
	3^ Decade	17.2	2.9	12.5	2.9	36	-35
Trapani	1^ Decade	20.9	1.3	12.9	1.2	22	24
	2^ Decade	19.6	1.9	12.5	1.3	22	3
	3^ Decade	17.6	4.7	10.5	4.9	22	-21
Prizzi	1^ Decade	13.9	1.4	7.9	1.5	23	20
	2^ Decade	12.0	2.9	6.6	2.1	23	2
	3^ Decade	9.9	7.8	4.6	5.8	23	-18
Catania Sigonella	1^ Decade	21.8	1.1	10.8	-0.1	16	27
	2^ Decade	20.4	2.7	9.6	2.1	16	-15
	3^ Decade	18.5	3.2	7.9	4.4	16	-17
Cozzo Spadaro	1^ Decade	21.1	0.2	15.0	0.6	17	100
	2^ Decade	19.8	1.5	13.9	1.6	17	-17
	3^ Decade	18.4	1.8	11.9	3.7	17	-14
Capo Frasca	1^ Decade	19.2	1.9	12.6	1.7	35	10
	2^ Decade	17.6	0.8	11.7	1.1	35	52
	3^ Decade	15.7	6.0	9.5	7.2	35	-26
Capo Bellavista(*)	1^ Decade	18.8	1.8	13.1	0.6	19	-8
	2^ Decade	17.7	2.3	12.0	0.7	19	49
	3^ Decade	16.1	6.3	10.5	6.8	19	-21
Cagliari/Decimomannu	1^ Decade	20.2	1.5	9.9	1.0	22	-11
	2^ Decade	18.4	2.8	9.0	1.9	22	30
	3^ Decade	16.3	4.6	6.7	4.9	22	-17

n.a.: non disponibile per dati insufficienti nel periodo in esame. - not available for data gaps in the reporting period.

(*)Stazioni aderenti al Programma WMO - GCOS (Global Climate Observation System)





1923

METEOROLOGICO