

**Anomalie Termico/Pluviometriche rispetto al CliNo principale 61-90****Thermo-Pluviometric anomalies vs CliNo 61-90**

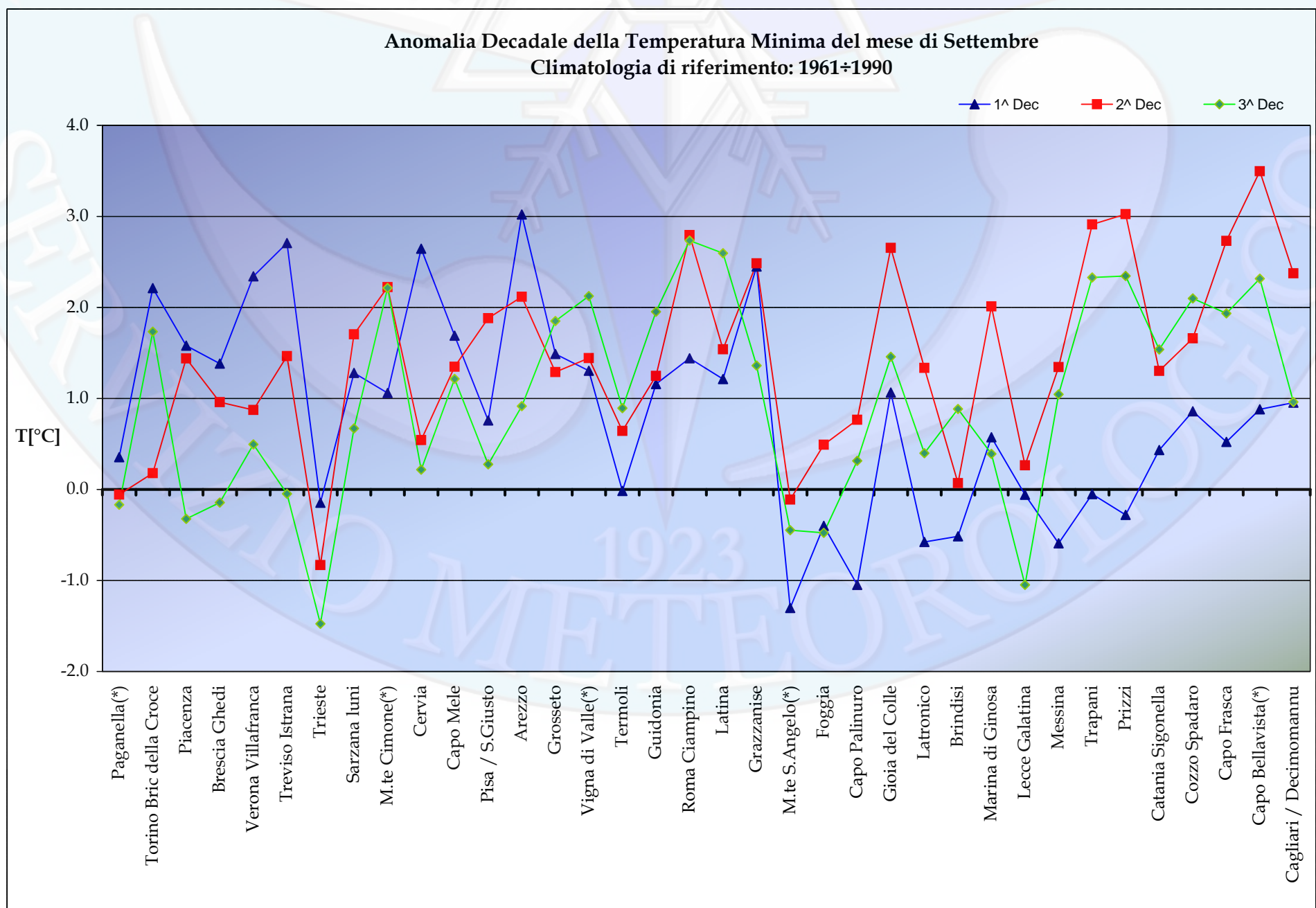
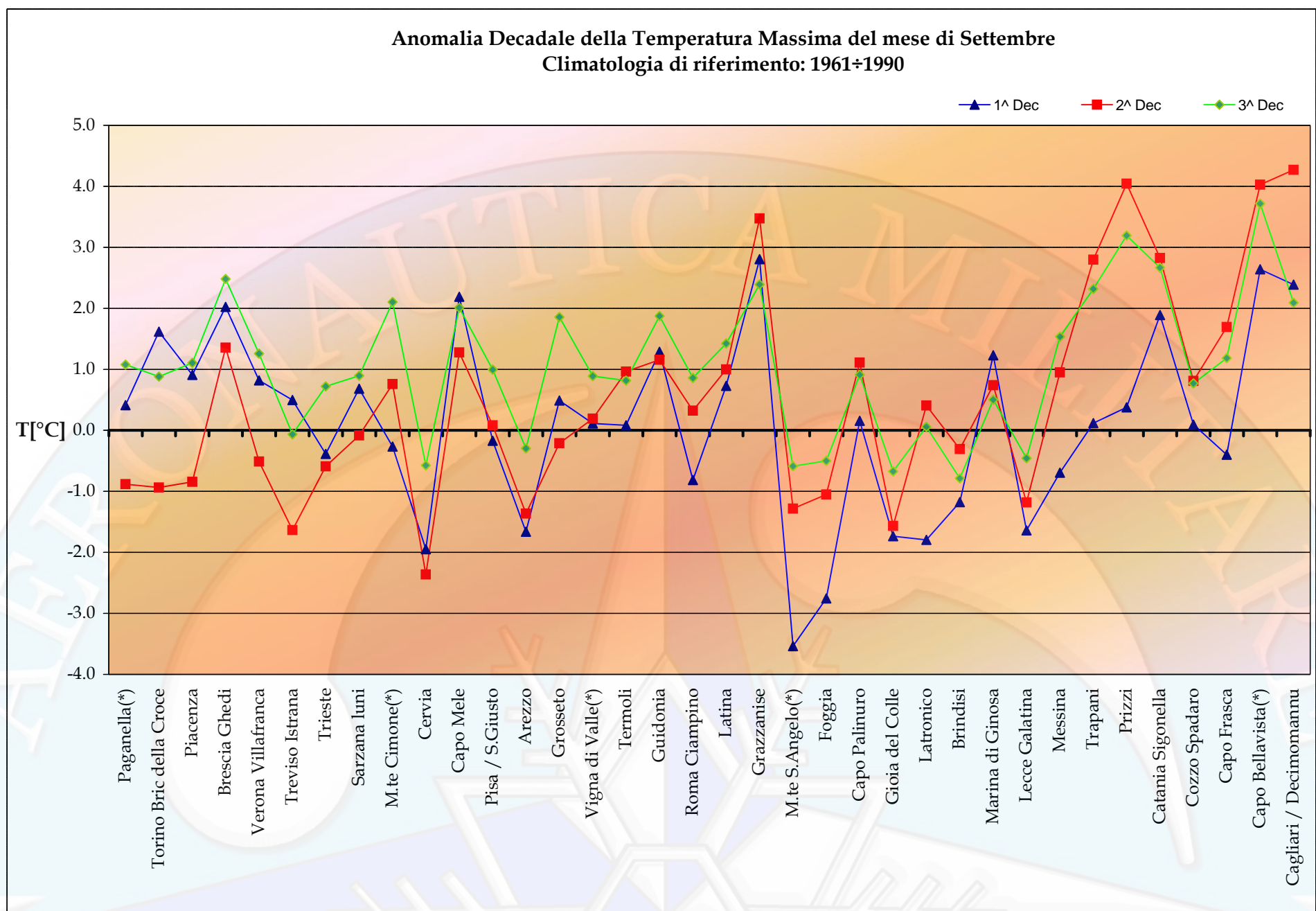
Stazioni	Settembre '14 September '14	Tmax Media Average °C Clino 61-90	Anomalia Anomaly	Tmin Media Average °C Clino 61-90	Anomalia Anomaly	Precipitazione Tot. Precipitation mm. Clino 61-90	Anomalia Anomaly
Paganella(*)	1^ Decade	11.1	0.4	5.1	0.4	30	7
	2^ Decade	10.5	-0.9	4.3	-0.1	30	-28
	3^ Decade	9.2	1.1	3.8	-0.2	30	-30
Torino Bric della Croce	1^ Decade	21.3	1.6	14.2	2.2	21	-3
	2^ Decade	20.2	-0.9	13.4	0.2	21	-5
	3^ Decade	18.8	0.9	12.7	1.7	21	-17
Piacenza	1^ Decade	25.2	0.9	13.8	1.6	19	15
	2^ Decade	24.0	-0.8	12.9	1.4	19	6
	3^ Decade	22.6	1.1	11.6	-0.3	19	-17
Brescia Ghedi	1^ Decade	25.2	2.0	15.1	1.4	21	18
	2^ Decade	24.2	1.4	13.9	1.0	21	-7
	3^ Decade	22.9	2.5	12.7	-0.1	21	-20
Verona Villafranca	1^ Decade	25.5	0.8	14.9	2.3	21	0
	2^ Decade	24.6	-0.5	13.9	0.9	21	-6
	3^ Decade	23.0	1.3	12.4	0.5	21	-21
Treviso Istrana	1^ Decade	25.7	0.5	14.6	2.7	24	54
	2^ Decade	24.7	-1.6	13.5	1.5	24	8
	3^ Decade	23.3	-0.1	12.4	0.0	24	43
Trieste	1^ Decade	25.1	-0.4	17.8	-0.1	34	22
	2^ Decade	23.5	-0.6	16.7	-0.8	34	35
	3^ Decade	22.2	0.7	15.7	-1.5	34	-19
Sarzana Iuni	1^ Decade	25.8	0.7	15.7	1.3	27	4
	2^ Decade	25.1	-0.1	15.1	1.7	27	7
	3^ Decade	24.1	0.9	14.4	0.7	27	-26
M.te Cimone(*)	1^ Decade	10.6	-0.3	5.9	1.1	26	51
	2^ Decade	10.1	0.8	5.4	2.2	26	39
	3^ Decade	8.9	2.1	4.3	2.2	26	-24
Cervia	1^ Decade	25.4	-1.9	14.5	2.6	24	4
	2^ Decade	24.7	-2.4	13.8	0.5	24	29
	3^ Decade	23.5	-0.6	12.6	0.2	24	-23
Capo Mele	1^ Decade	25.0	2.2	18.6	1.7	19	-18
	2^ Decade	24.0	1.3	17.8	1.3	19	-16
	3^ Decade	23.0	2.0	17.1	1.2	19	26
Pisa / S.Giusto	1^ Decade	26.7	-0.2	15.2	0.8	29	1
	2^ Decade	25.8	0.1	14.4	1.9	29	3
	3^ Decade	24.7	1.0	13.3	0.3	29	-29
Arezzo	1^ Decade	26.3	-1.7	11.9	3.0	21	13
	2^ Decade	25.6	-1.4	11.3	2.1	21	22
	3^ Decade	24.1	-0.3	10.0	0.9	21	-19
Grosseto	1^ Decade	27.6	0.5	15.6	1.5	22	-10
	2^ Decade	26.5	-0.2	14.9	1.3	22	n.a.
	3^ Decade	25.3	1.9	13.7	1.8	22	n.a.
Vigna di Valle(*)	1^ Decade	26.2	0.1	16.6	1.3	29	-27
	2^ Decade	25.4	0.2	16.0	1.4	29	-15
	3^ Decade	23.8	0.9	14.9	2.1	29	-25
Termoli	1^ Decade	25.0	0.1	19.5	0.0	15	20
	2^ Decade	24.4	1.0	18.8	0.6	15	-14
	3^ Decade	23.2	0.8	17.8	0.9	15	-14
Guidonia	1^ Decade	28.8	1.3	14.9	1.2	25	-2
	2^ Decade	27.8	1.2	14.3	1.2	25	0
	3^ Decade	26.4	1.9	13.0	2.0	25	-21
Roma Ciampino	1^ Decade	27.9	-0.8	15.8	1.4	25	-15
	2^ Decade	27.0	0.3	14.8	2.8	25	-3
	3^ Decade	25.6	0.9	13.7	2.7	25	-13

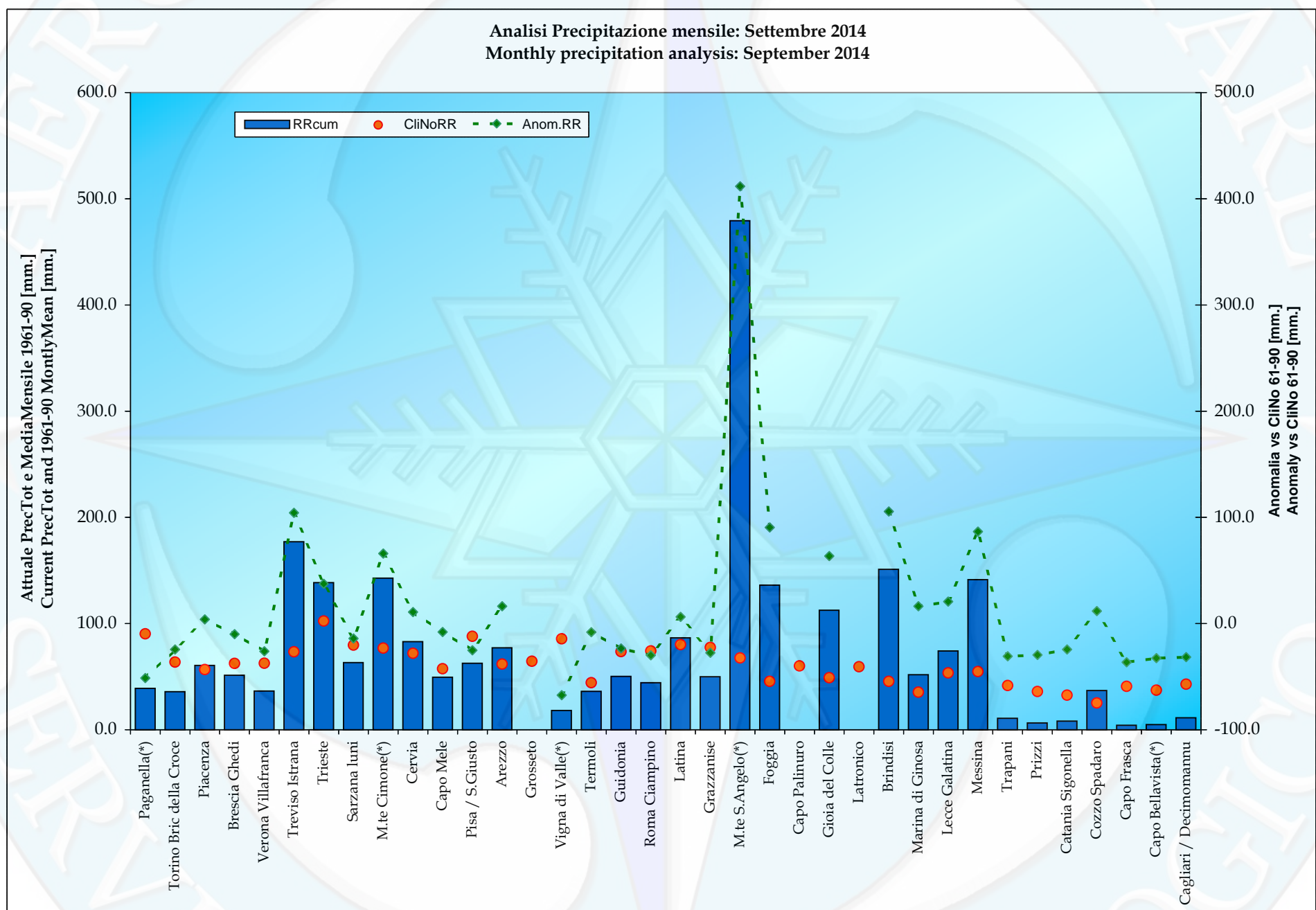
<i>Anomalie Termico/Pluviometriche rispetto al CliNo principale 61-90</i>							
<i>Thermo-Pluviometric anomalies vs CliNo 61-90</i>							
Stazioni	Settembre '14 September '14	Tmax Media Average °C Clino 61-90	Anomalia Anomaly	Tmin Media Average °C Clino 61-90	Anomalia Anomaly	Precipitazione Tot. Precipitation mm. Clino 61-90	Anomalia Anomaly
Latina	1^ Decade	28.1	0.7	16.0	1.2	27	14
	2^ Decade	27.6	1.0	15.3	1.5	27	19
	3^ Decade	26.1	1.4	14.3	2.6	27	-26
Grazzanise	1^ Decade	27.6	2.8	16.0	2.4	26	-10
	2^ Decade	26.8	3.5	15.1	2.5	26	-6
	3^ Decade	25.5	2.4	14.3	1.4	26	-12
M.te S.Angelo(*)	1^ Decade	21.6	-3.5	14.8	-1.3	22	414
	2^ Decade	21.0	-1.3	14.4	-0.1	22	2
	3^ Decade	19.1	-0.6	12.8	-0.4	22	-4
Foggia	1^ Decade	28.8	-2.8	16.4	-0.4	15	108
	2^ Decade	27.8	-1.1	15.2	0.5	15	-10
	3^ Decade	26.3	-0.5	14.1	-0.5	15	-8
Capo Palinuro	1^ Decade	26.6	0.2	19.3	-1.0	20	n.a.
	2^ Decade	25.9	1.1	18.9	0.8	20	n.a.
	3^ Decade	24.6	0.9	17.6	0.3	20	n.a.
Gioia del Colle	1^ Decade	26.5	-1.7	14.4	1.1	16	18
	2^ Decade	25.6	-1.6	13.2	2.7	16	12
	3^ Decade	23.8	-0.7	12.4	1.5	16	34
Latronico	1^ Decade	21.8	-1.8	14.6	-0.6	20	11
	2^ Decade	21.3	0.4	14.1	1.3	20	n.a.
	3^ Decade	19.4	0.1	13.0	0.4	20	n.a.
Brindisi	1^ Decade	26.9	-1.2	19.2	-0.5	15	92
	2^ Decade	25.9	-0.3	18.0	0.1	15	22
	3^ Decade	24.8	-0.8	17.3	0.9	15	-8
Marina di Ginosa	1^ Decade	27.8	1.2	18.1	0.6	12	1
	2^ Decade	26.9	0.7	17.1	2.0	12	20
	3^ Decade	25.5	0.5	16.0	0.4	12	-5
Lecce Galatina	1^ Decade	28.5	-1.6	17.4	-0.1	18	36
	2^ Decade	27.6	-1.2	16.3	0.3	18	2
	3^ Decade	26.1	-0.5	15.7	-1.0	18	-17
Messina	1^ Decade	28.2	-0.7	22.0	-0.6	18	116
	2^ Decade	27.4	0.9	21.3	1.3	18	-18
	3^ Decade	26.1	1.5	20.1	1.0	18	-11
Trapani	1^ Decade	28.7	0.1	19.2	-0.1	14	-12
	2^ Decade	27.8	2.8	18.3	2.9	14	-13
	3^ Decade	26.6	2.3	17.6	2.3	14	-6
Prizzi	1^ Decade	24.1	0.4	14.7	-0.3	12	-7
	2^ Decade	22.8	4.0	14.0	3.0	12	-11
	3^ Decade	21.0	3.2	12.8	2.3	12	-11
Catania Sigonella	1^ Decade	30.8	1.9	18.1	0.4	12	-11
	2^ Decade	29.9	2.8	17.1	1.3	12	-10
	3^ Decade	28.5	2.7	16.0	1.5	12	-4
Cozzo Spadaro	1^ Decade	28.4	0.1	21.3	0.9	8	-8
	2^ Decade	27.8	0.8	20.7	1.7	8	-8
	3^ Decade	26.6	0.8	19.6	2.1	8	28
Capo Frasca	1^ Decade	26.6	-0.4	18.9	0.5	14	-14
	2^ Decade	25.9	1.7	18.4	2.7	14	-13
	3^ Decade	25.1	1.2	17.5	1.9	14	-10
Capo Bellavista(*)	1^ Decade	26.9	2.6	19.8	0.9	14	-11
	2^ Decade	26.0	4.0	18.9	3.5	14	-11
	3^ Decade	24.9	3.7	18.2	2.3	14	-10
Cagliari/Decimomannu	1^ Decade	29.3	2.4	17.0	1.0	12	-12
	2^ Decade	28.1	4.3	16.1	2.4	12	-14
	3^ Decade	26.8	2.1	15.4	1.0	12	-6

n.a.: non disponibile per dat insufficienti nel periodo in esame. - not available for data gaps in the reporting period.

(\*)Stazioni aderenti al Programma WMO - GCOS (Global Climate Observation System)







1923

METEOROLOGICO