

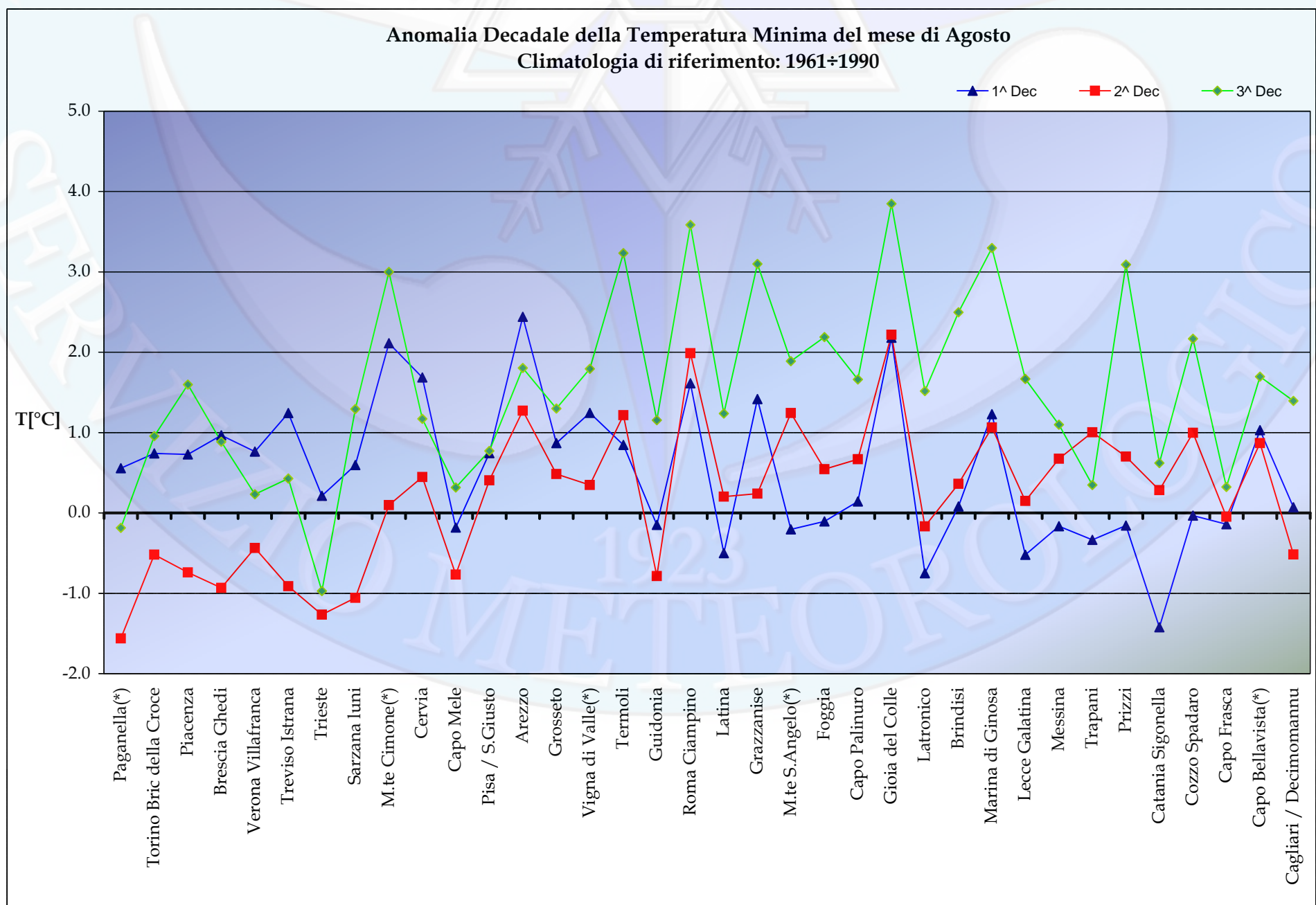
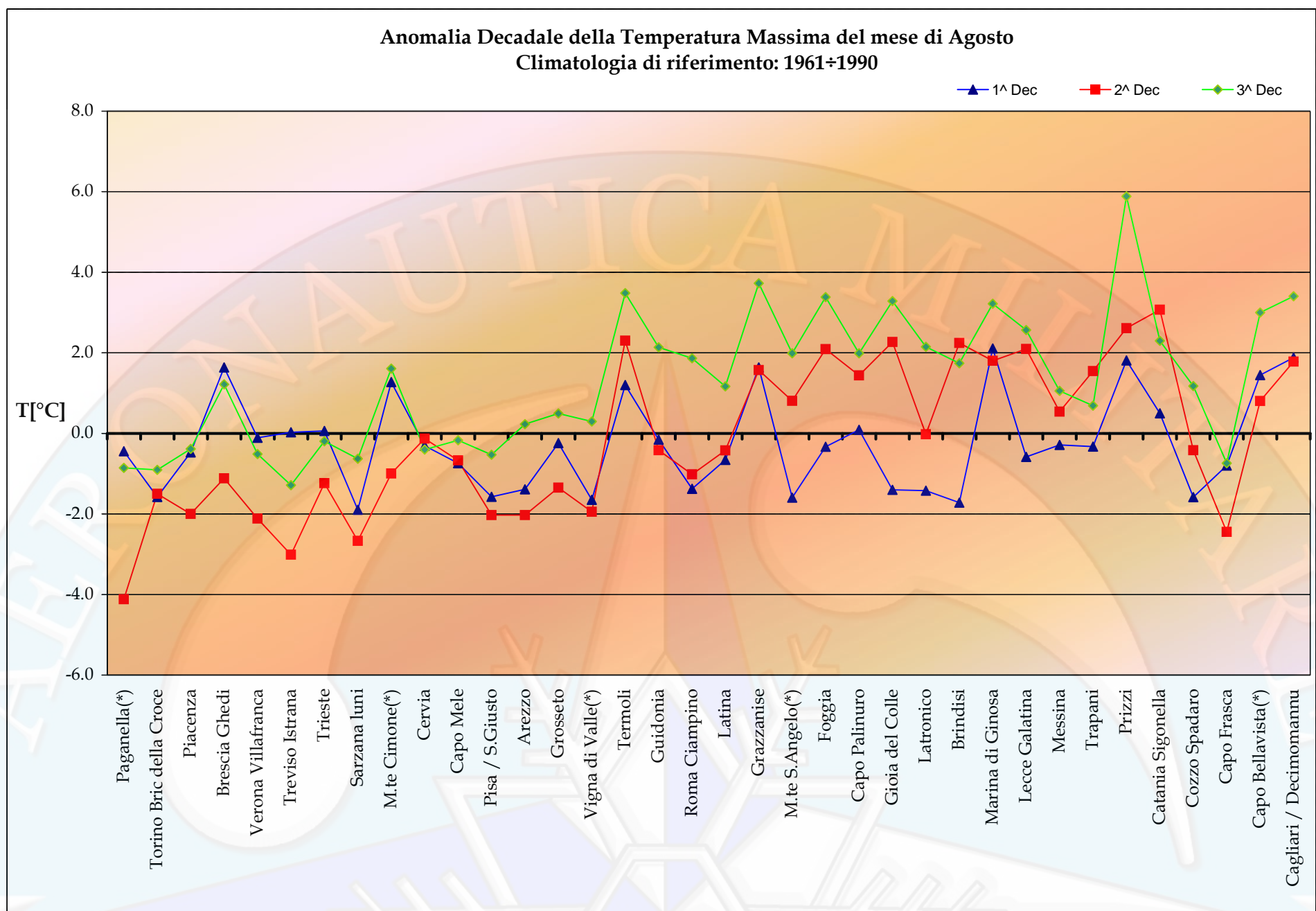
Anomalie Termico/Pluviometriche rispetto al CliNo principale 61-90**Thermo-Pluviometric anomalies vs CliNo 61-90**

Stazioni	Agosto '14 August '14	Tmax Media Average °C Clino 61-90	Anomalia Anomaly	Tmin Media Average °C Clino 61-90	Anomalia Anomaly	Precipitazione Tot. Precipitation mm. Clino 61-90	Anomalia Anomaly
Paganella(*)	1^ Decade	14.3	-0.4	6.7	0.6	31	-8
	2^ Decade	13.7	-4.1	7.1	-1.6	31	30
	3^ Decade	11.7	-0.9	5.3	-0.2	31	4
Torino Bric della Croce	1^ Decade	24.7	-1.6	16.6	0.7	24	20
	2^ Decade	24.0	-1.5	16.3	-0.5	24	-20
	3^ Decade	21.9	-0.9	14.8	1.0	24	-17
Piacenza	1^ Decade	28.6	-0.5	16.4	0.7	22	-11
	2^ Decade	27.8	-2.0	16.5	-0.7	22	-11
	3^ Decade	25.6	-0.4	15.1	1.6	22	0
Brescia Ghedi	1^ Decade	28.8	1.6	18.0	1.0	28	-15
	2^ Decade	28.0	-1.1	17.6	-0.9	28	16
	3^ Decade	26.0	1.2	16.0	0.9	28	20
Verona Villafranca	1^ Decade	29.3	-0.1	18.1	0.8	29	0
	2^ Decade	28.5	-2.1	17.6	-0.4	29	5
	3^ Decade	26.5	-0.5	16.0	0.2	29	11
Treviso Istrana	1^ Decade	29.1	0.0	17.5	1.2	29	-19
	2^ Decade	28.6	-3.0	17.1	-0.9	29	56
	3^ Decade	26.5	-1.3	15.6	0.4	29	60
Trieste	1^ Decade	28.5	0.1	20.4	0.2	34	-33
	2^ Decade	28.0	-1.2	20.0	-1.3	34	-11
	3^ Decade	26.0	-0.2	18.6	-1.0	34	12
Sarzana Iuni	1^ Decade	29.6	-1.9	18.1	0.6	19	n.a
	2^ Decade	29.1	-2.7	18.1	-1.1	19	n.a
	3^ Decade	27.0	-0.6	16.6	1.3	19	n.a
M.te Cimone(*)	1^ Decade	13.9	1.3	8.7	2.1	25	-19
	2^ Decade	13.3	-1.0	8.4	0.1	25	-13
	3^ Decade	11.0	1.6	6.2	3.0	25	-16
Cervia	1^ Decade	28.9	-0.3	17.0	1.7	20	-9
	2^ Decade	28.5	-0.1	16.8	0.4	20	-3
	3^ Decade	26.5	-0.4	15.4	1.2	20	-17
Capo Mele	1^ Decade	27.5	-0.7	20.8	-0.2	11	-9
	2^ Decade	27.2	-0.7	20.7	-0.8	11	19
	3^ Decade	25.8	-0.2	19.3	0.3	11	-11
Pisa / S.Giusto	1^ Decade	29.8	-1.6	17.1	0.7	19	-18
	2^ Decade	29.1	-2.0	16.9	0.4	19	-18
	3^ Decade	27.5	-0.5	16.0	0.8	19	-17
Arezzo	1^ Decade	30.6	-1.4	14.2	2.4	17	-17
	2^ Decade	29.9	-2.0	13.7	1.3	17	9
	3^ Decade	27.2	0.2	12.8	1.8	17	-8
Grosseto	1^ Decade	30.7	-0.2	17.6	0.9	12	n.a
	2^ Decade	30.2	-1.3	17.4	0.5	12	-12
	3^ Decade	28.6	0.5	16.4	1.3	12	123
Vigna di Valle(*)	1^ Decade	30.3	-1.6	18.7	1.2	15	-14
	2^ Decade	29.6	-1.9	18.5	0.3	15	-15
	3^ Decade	27.3	0.3	17.3	1.8	15	1
Termoli	1^ Decade	27.6	1.2	21.9	0.8	11	-11
	2^ Decade	27.1	2.3	21.6	1.2	11	-6
	3^ Decade	25.8	3.5	20.1	3.2	11	-11
Guidonia	1^ Decade	32.6	-0.2	17.2	-0.1	15	-13
	2^ Decade	31.9	-0.4	16.8	-0.8	15	-15
	3^ Decade	29.7	2.1	15.8	1.2	15	-7
Roma Ciampino	1^ Decade	31.4	-1.4	18.1	1.6	11	-7
	2^ Decade	30.8	-1.0	17.8	2.0	11	-10
	3^ Decade	28.8	1.9	16.7	3.6	11	-11

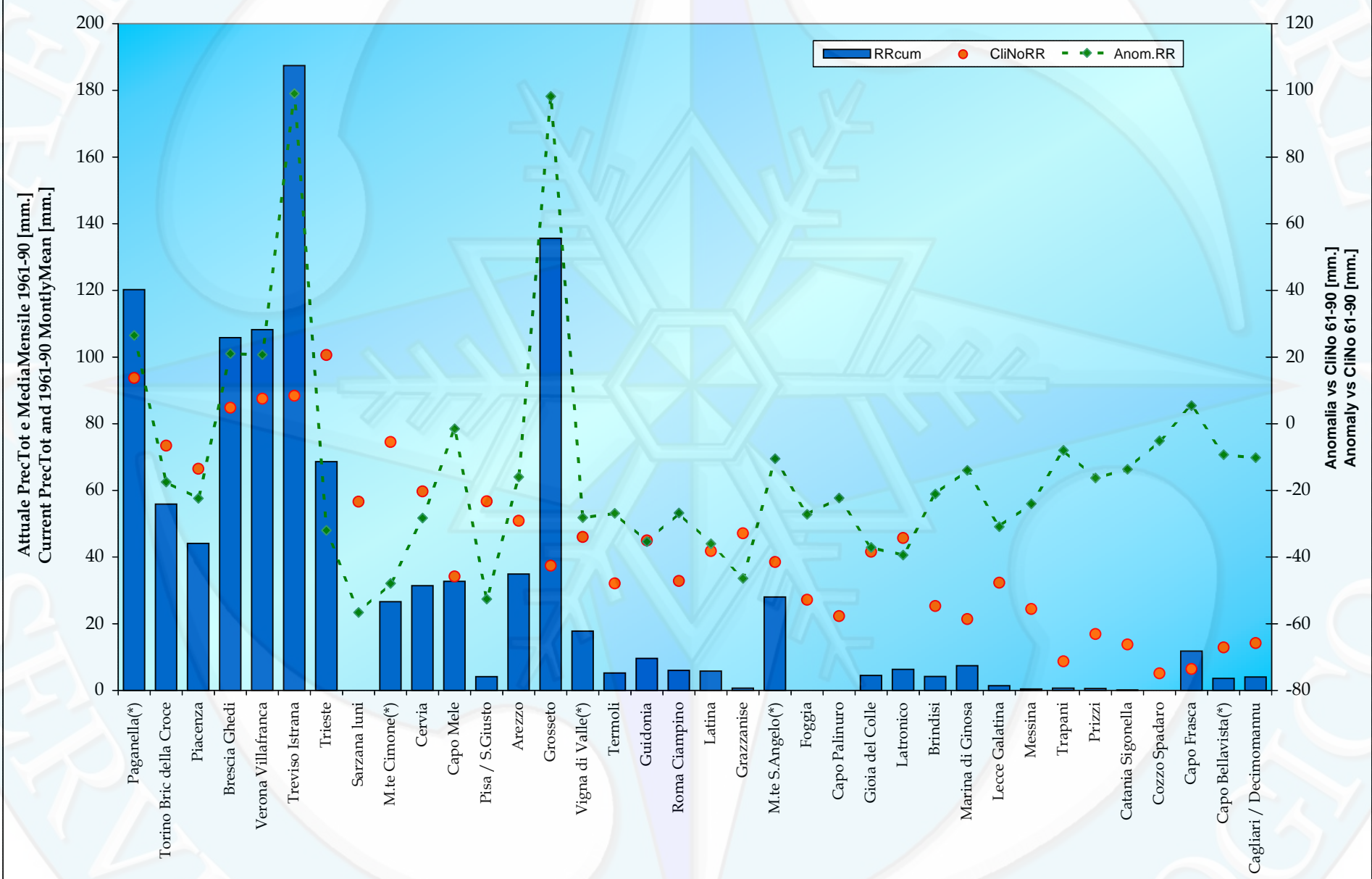
<i>Anomalie Termico/Pluviometriche rispetto al CliNo principale 61-90</i>							
<i>Thermo-Pluviometric anomalies vs CliNo 61-90</i>							
Stazioni	Agosto '14 August '14	Tmax Media Average °C Clino 61-90	Anomalia Anomaly	Tmin Media Average °C Clino 61-90	Anomalia Anomaly	Precipitazione Tot. Precipitation mm. Clino 61-90	Anomalia Anomaly
Latina	1^ Decade	31.3	-0.7	17.7	-0.5	14	-11
	2^ Decade	30.9	-0.4	17.5	0.2	14	-9
	3^ Decade	29.1	1.2	16.8	1.2	14	-13
Grazzanise	1^ Decade	30.5	1.6	17.9	1.4	16	-16
	2^ Decade	30.2	1.6	17.6	0.2	16	-15
	3^ Decade	28.5	3.7	16.9	3.1	16	-16
M.te S.Angelo(*)	1^ Decade	25.5	-1.6	18.1	-0.2	13	-1
	2^ Decade	24.6	0.8	17.2	1.2	13	-6
	3^ Decade	22.4	2.0	15.5	1.9	13	-6
Foggia	1^ Decade	32.6	-0.3	18.6	-0.1	9	-9
	2^ Decade	31.9	2.1	18.3	0.5	9	-9
	3^ Decade	29.8	3.4	17.2	2.2	9	-9
Capo Palinuro	1^ Decade	29.0	0.1	21.5	0.1	7	n.a
	2^ Decade	28.6	1.4	21.1	0.7	7	n.a
	3^ Decade	27.5	2.0	20.0	1.7	7	n.a
Gioia del Colle	1^ Decade	30.5	-1.4	16.1	2.2	14	-13
	2^ Decade	29.6	2.3	16.2	2.2	14	-12
	3^ Decade	27.5	3.3	15.2	3.8	14	-12
Latronico	1^ Decade	25.4	-1.4	17.3	-0.8	15	-10
	2^ Decade	24.5	0.0	16.8	-0.2	15	-15
	3^ Decade	22.5	2.1	15.2	1.5	15	-15
Brindisi	1^ Decade	29.2	-1.7	21.0	0.1	8	-5
	2^ Decade	28.9	2.2	20.9	0.4	8	-8
	3^ Decade	27.9	1.7	19.9	2.5	8	-8
Marina di Ginosa	1^ Decade	30.8	2.1	20.2	1.2	7	0
	2^ Decade	30.4	1.8	19.9	1.1	7	-7
	3^ Decade	28.5	3.2	18.9	3.3	7	-7
Lecce Galatina	1^ Decade	32.0	-0.6	19.5	-0.5	11	-11
	2^ Decade	31.3	2.1	19.2	0.1	11	-10
	3^ Decade	29.5	2.6	18.3	1.7	11	-11
Messina	1^ Decade	30.6	-0.3	24.0	-0.2	8	-8
	2^ Decade	30.2	0.5	23.8	0.7	8	-8
	3^ Decade	29.0	1.1	22.8	1.1	8	-8
Trapani	1^ Decade	30.9	-0.3	20.5	-0.3	3	-2
	2^ Decade	30.1	1.5	20.2	1.0	3	-3
	3^ Decade	29.3	0.7	19.9	0.3	3	-3
Prizzi	1^ Decade	28.0	1.8	17.5	-0.2	6	-6
	2^ Decade	27.0	2.6	17.0	0.7	6	-5
	3^ Decade	25.0	5.9	15.2	3.1	6	-5
Catania Sigonella	1^ Decade	33.9	0.5	19.4	-1.4	5	-5
	2^ Decade	33.5	3.1	19.7	0.3	5	-5
	3^ Decade	32.0	2.3	18.9	0.6	5	-5
Cozzo Spadaro	1^ Decade	30.5	-1.6	22.6	0.0	2	-2
	2^ Decade	30.4	-0.4	22.3	1.0	2	-2
	3^ Decade	29.1	1.2	21.8	2.2	2	-2
Capo Frasca	1^ Decade	29.0	-0.8	20.6	-0.1	2	10
	2^ Decade	28.9	-2.4	20.6	0.0	2	-2
	3^ Decade	27.3	-0.7	19.9	0.3	2	-2
Capo Bellavista(*)	1^ Decade	29.2	1.4	21.7	1.0	4	-1
	2^ Decade	29.1	0.8	21.6	0.9	4	-5
	3^ Decade	27.9	3.0	20.5	1.7	4	-5
Cagliari/Decimomannu	1^ Decade	32.2	1.9	18.7	0.1	5	-2
	2^ Decade	32.1	1.8	18.5	-0.5	5	-3
	3^ Decade	30.0	3.4	17.7	1.4	5	-4

n.a.: non disponibile per dati insufficienti nel periodo in esame. - not available for data gaps in the reporting period.

(*)Stazioni aderenti al Programma WMO - GCOS (Global Climate Observation System)



Analisi Precipitazione mensile: Agosto 2014
Monthly precipitation analysis: August 2014



1923

METEOROLOGICO