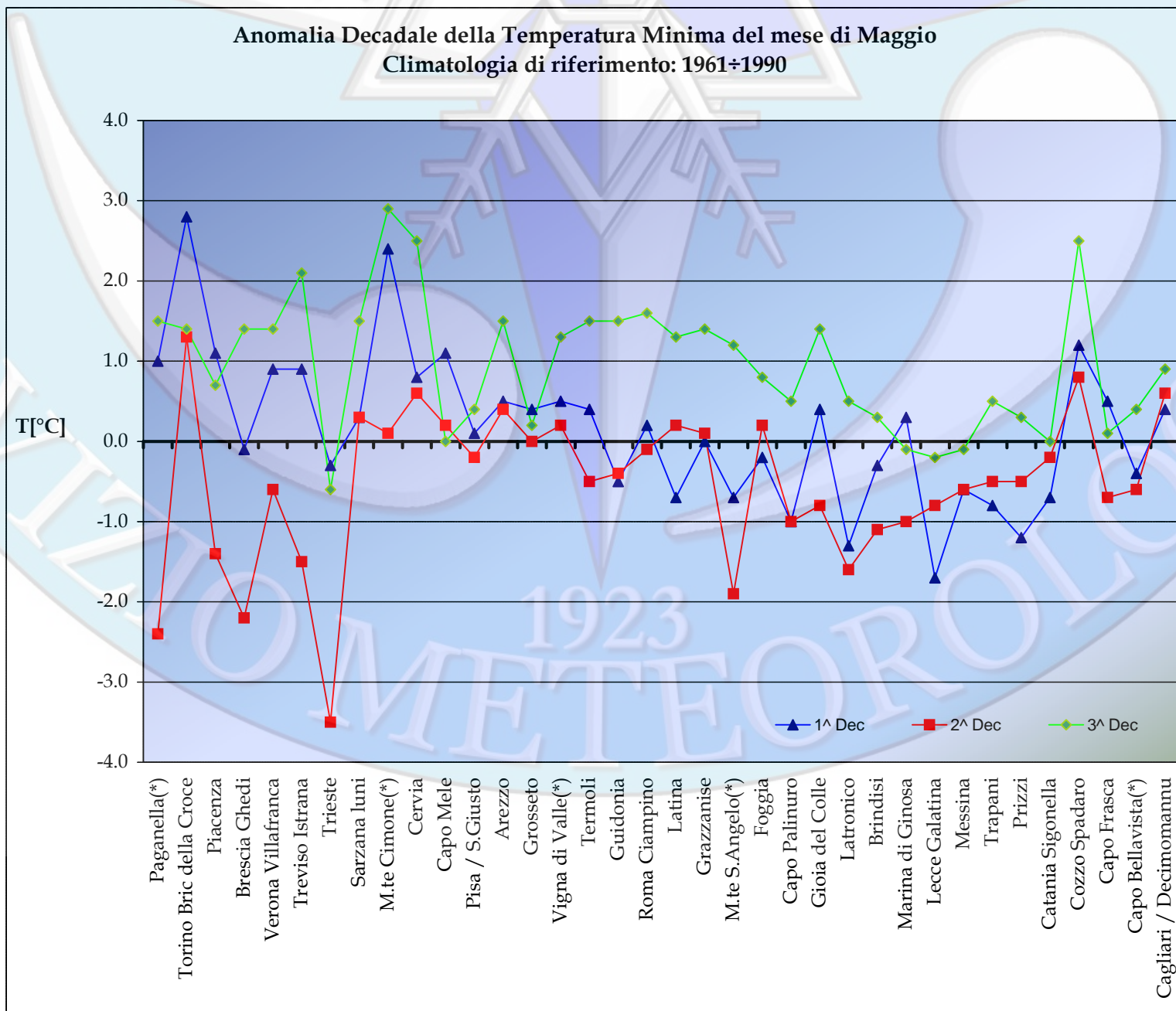
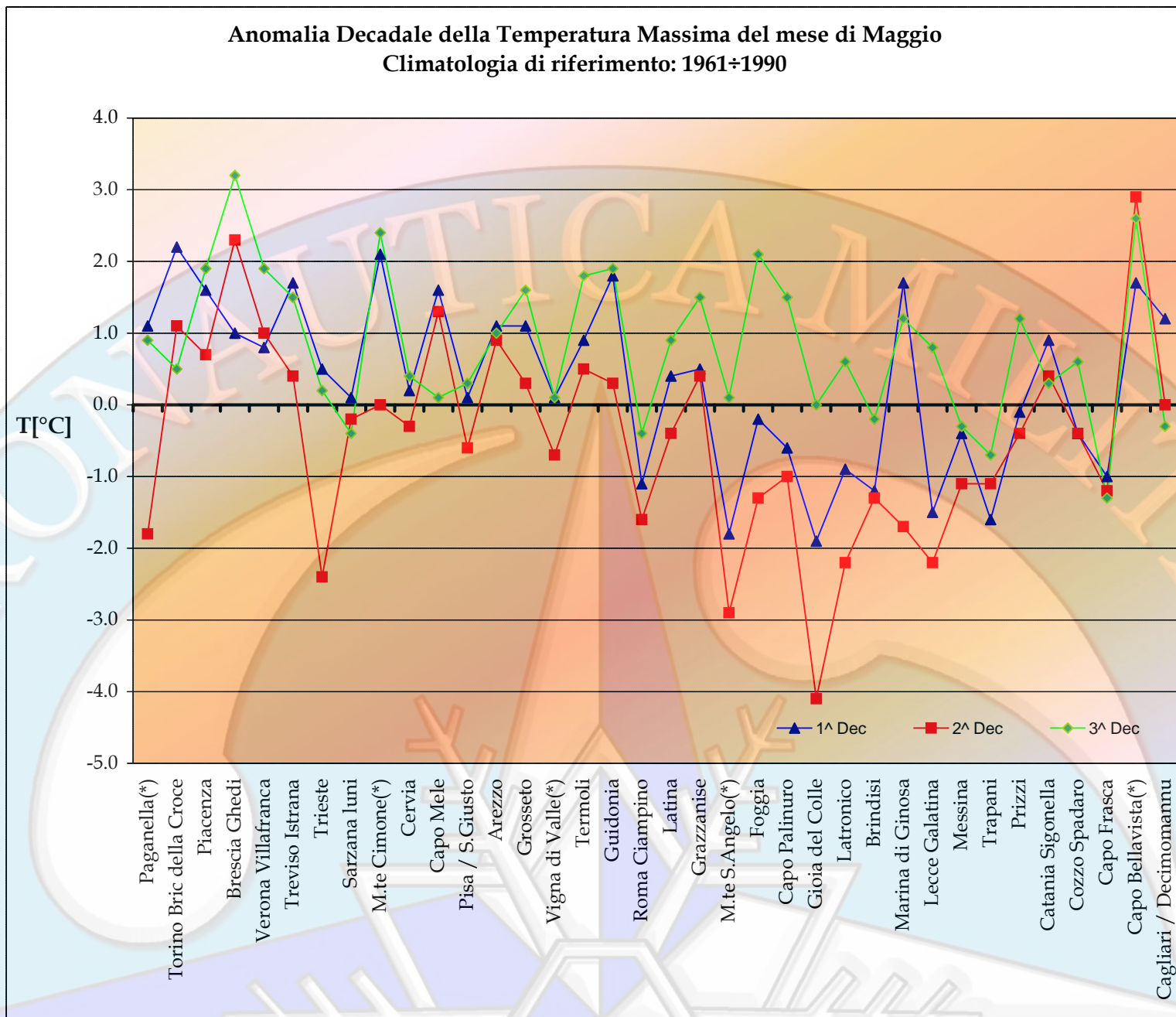
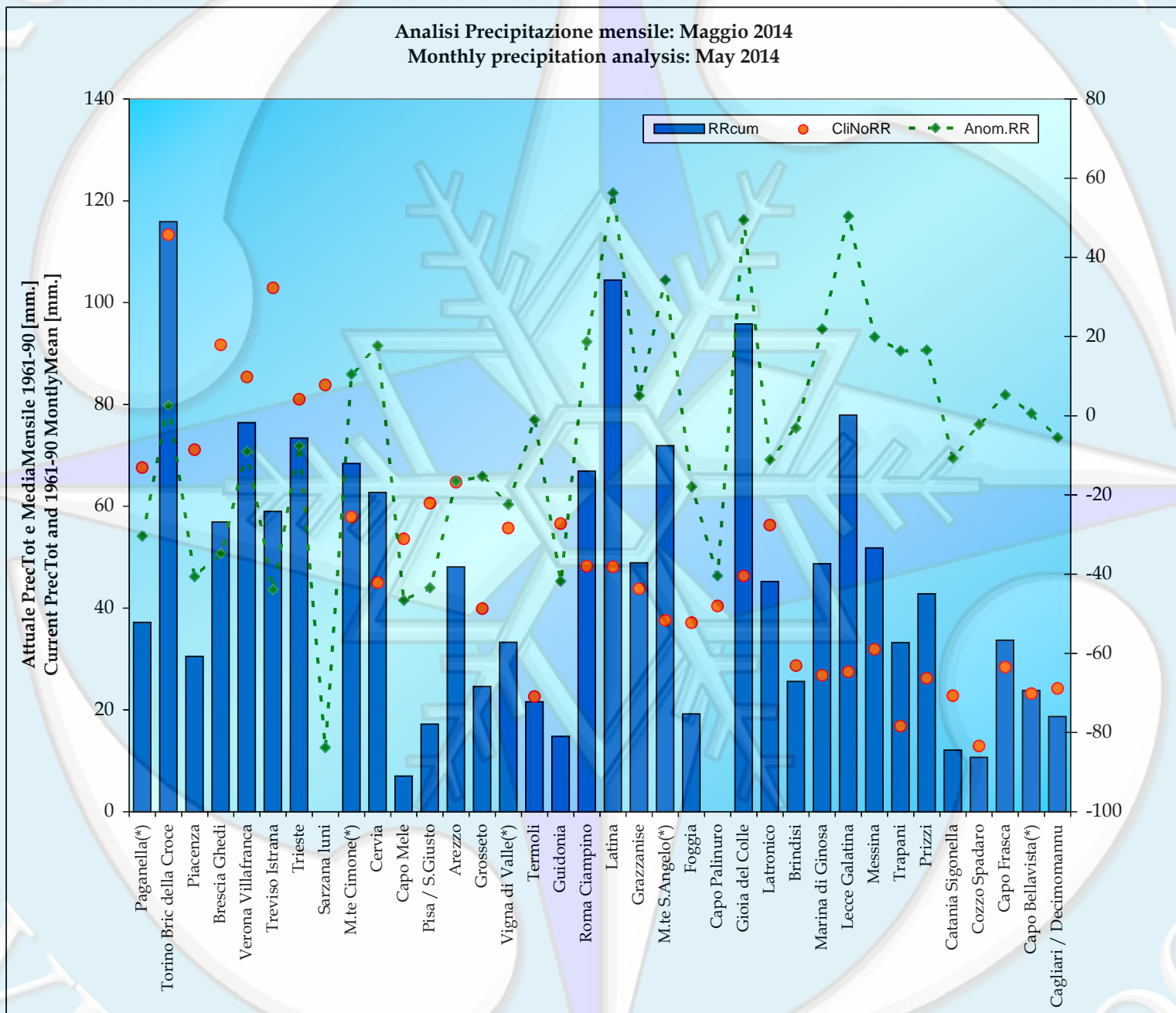


<i>Anomalie Termico/Pluviometriche rispetto al CliNo principale 61-90</i>							
<i>Thermo-Pluviometric anomalies vs CliNo 61-90</i>							
Stazioni	Maggio '14 May '14	Tmax Media Average °C Clino 61-90	Anomalia Anomaly	Tmin Media Average °C Clino 61-90	Anomalia Anomaly	Precipitazione Tot. Precipitation mm. Clino 61-90	Anomalia Anomaly
Paganella(*)	1^ Decade	4.7	1.1	-0.5	1.0	23	-18
	2^ Decade	6.6	-1.8	1.0	-2.4	23	-19
	3^ Decade	7.7	0.9	1.6	1.5	23	6
Torino Bric della Croce	1^ Decade	16.3	2.2	8.7	2.8	38	17
	2^ Decade	17.6	1.1	10.3	1.3	38	-37
	3^ Decade	18.6	0.5	10.8	1.4	38	22
Piacenza	1^ Decade	20.1	1.6	8.0	1.1	24	-8
	2^ Decade	21.6	0.7	9.7	-1.4	24	-24
	3^ Decade	22.8	1.9	10.6	0.7	24	-9
Brescia Ghedi	1^ Decade	20.6	1.0	9.7	-0.1	31	4
	2^ Decade	21.9	2.3	11.6	-2.2	31	-27
	3^ Decade	23.2	3.2	12.5	1.4	31	-12
Verona Villafranca	1^ Decade	20.9	0.8	9.6	0.9	28	9
	2^ Decade	22.6	1.0	11.8	-0.6	28	-6
	3^ Decade	23.4	1.9	12.6	1.4	28	-11
Treviso Istrana	1^ Decade	20.8	1.7	9.6	0.9	34	-17
	2^ Decade	22.9	0.4	11.6	-1.5	34	-21
	3^ Decade	23.6	1.5	12.2	2.1	34	-6
Trieste	1^ Decade	20.2	0.5	12.6	-0.3	27	-16
	2^ Decade	22.2	-2.4	14.4	-3.5	27	-19
	3^ Decade	22.8	0.2	15.0	-0.6	27	27
Sarzana luni	1^ Decade	19.8	0.1	10.5	0.3	28	-28
	2^ Decade	21.6	-0.2	11.8	0.3	28	-28
	3^ Decade	22.8	-0.4	12.8	1.5	28	-28
M.te Cimone(*)	1^ Decade	4.1	2.1	-0.1	2.4	19	-1
	2^ Decade	5.8	0.0	1.4	0.1	19	-6
	3^ Decade	6.4	2.4	2.0	2.9	19	17
Cervia	1^ Decade	20.0	0.2	9.0	0.8	15	29
	2^ Decade	22.3	-0.3	10.6	0.6	15	-9
	3^ Decade	23.4	0.4	11.2	2.5	15	-2
Capo Mele	1^ Decade	18.1	1.6	12.1	1.1	18	-12
	2^ Decade	19.6	1.3	13.6	0.2	18	-17
	3^ Decade	20.6	0.1	14.5	0.0	18	-17
Pisa / S.Giusto	1^ Decade	20.4	0.1	9.3	0.1	20	-5
	2^ Decade	22.2	-0.6	10.7	-0.2	20	-20
	3^ Decade	23.1	0.3	11.5	0.4	20	-19
Arezzo	1^ Decade	20.1	1.1	7.0	0.5	22	15
	2^ Decade	21.8	0.9	8.5	0.4	22	-14
	3^ Decade	22.9	1.0	9.0	1.5	22	-17
Grosseto	1^ Decade	20.5	1.1	8.8	0.4	13	-2
	2^ Decade	22.3	0.3	10.3	0.0	13	-5
	3^ Decade	23.5	1.6	11.4	0.2	13	-9
Vigna di Valle(*)	1^ Decade	19.5	0.1	9.9	0.5	19	-7
	2^ Decade	21.3	-0.7	11.4	0.2	19	-18
	3^ Decade	22.5	0.1	12.5	1.3	19	2
Termoli	1^ Decade	19.1	0.9	13.1	0.4	8	4
	2^ Decade	20.4	0.5	14.8	-0.5	8	-3
	3^ Decade	21.4	1.8	15.6	1.5	8	-3
Guidonia	1^ Decade	22.1	1.8	9.1	-0.5	19	-19
	2^ Decade	23.9	0.3	10.6	-0.4	19	-17
	3^ Decade	24.9	1.9	11.5	1.5	19	-6
Roma Ciampino	1^ Decade	21.1	-1.1	9.8	0.2	16	43
	2^ Decade	23.1	-1.6	11.3	-0.1	16	-14
	3^ Decade	24.4	-0.4	12.3	1.6	16	-11

<i>Anomalie Termico/Pluviometriche rispetto al CliNo principale 61-90</i>							
<i>Thermo-Pluviometric anomalies vs CliNo 61-90</i>							
Stazioni	Maggio '14 May '14	Tmax Media Average °C Clino 61-90	Anomalia Anomaly	Tmin Media Average °C Clino 61-90	Anomalia Anomaly	Precipitazione Tot. Precipitation mm. Clino 61-90	Anomalia Anomaly
Latina	1^ Decade	21.4	0.4	9.4	-0.7	16	79
	2^ Decade	23.3	-0.4	10.8	0.2	16	-14
	3^ Decade	24.6	0.9	12.0	1.3	16	-9
Grazzanise	1^ Decade	21.1	0.5	9.7	0.0	15	28
	2^ Decade	23.0	0.4	11.1	0.1	15	-9
	3^ Decade	24.1	1.5	12.1	1.4	15	-14
M.te S.Angelo(*)	1^ Decade	15.4	-1.8	8.9	-0.7	13	17
	2^ Decade	17.3	-2.9	10.7	-1.9	13	28
	3^ Decade	18.4	0.1	11.4	1.2	13	-11
Foggia	1^ Decade	22.2	-0.2	9.7	-0.2	12	-4
	2^ Decade	24.3	-1.3	11.2	0.2	12	-6
	3^ Decade	25.5	2.1	12.3	0.8	12	-8
Capo Palinuro	1^ Decade	19.7	-0.6	13.0	-1.0	13	-13
	2^ Decade	21.2	-1.0	14.4	-1.0	13	-13
	3^ Decade	22.5	1.5	15.4	0.5	13	-13
Gioia del Colle	1^ Decade	19.8	-1.9	8.2	0.4	15	43
	2^ Decade	22.0	-4.1	9.8	-0.8	15	8
	3^ Decade	23.5	0.0	10.6	1.4	15	-2
Latronico	1^ Decade	15.2	-0.9	8.4	-1.3	19	7
	2^ Decade	17.2	-2.2	10.0	-1.6	19	-11
	3^ Decade	18.1	0.6	11.2	0.5	19	-8
Brindisi	1^ Decade	20.5	-1.2	12.2	-0.3	10	3
	2^ Decade	22.1	-1.3	13.8	-1.1	10	3
	3^ Decade	23.4	-0.2	15.1	0.3	10	-8
Marina di Ginosa	1^ Decade	20.1	1.7	11.7	0.3	9	6
	2^ Decade	22.4	-1.7	13.3	-1.0	9	-8
	3^ Decade	24.0	1.2	14.5	-0.1	9	24
Lecce Galatina	1^ Decade	22.1	-1.5	11.0	-1.7	9	56
	2^ Decade	24.1	-2.2	12.2	-0.8	9	-8
	3^ Decade	25.7	0.8	13.8	-0.2	9	2
Messina	1^ Decade	20.8	-0.4	14.7	-0.6	11	20
	2^ Decade	22.4	-1.1	16.1	-0.6	11	-7
	3^ Decade	23.8	-0.3	17.4	-0.1	11	6
Trapani	1^ Decade	21.5	-1.6	12.1	-0.8	6	7
	2^ Decade	23.2	-1.1	13.2	-0.5	6	7
	3^ Decade	24.4	-0.7	14.3	0.5	6	3
Prizzi	1^ Decade	16.5	-0.1	8.2	-1.2	9	4
	2^ Decade	18.3	-0.4	9.9	-0.5	9	-3
	3^ Decade	20.3	1.2	11.2	0.3	9	15
Catania Sigonella	1^ Decade	23.4	0.9	10.0	-0.7	8	-7
	2^ Decade	25.4	0.4	11.6	-0.2	8	-2
	3^ Decade	26.9	0.3	12.9	0.0	8	-1
Cozzo Spadaro	1^ Decade	20.8	-0.4	13.6	1.2	4	3
	2^ Decade	22.4	-0.4	14.9	0.8	4	-2
	3^ Decade	23.7	0.6	16.2	2.5	4	-3
Capo Frasca	1^ Decade	19.1	-1.0	12.1	0.5	9	7
	2^ Decade	21.0	-1.2	13.4	-0.7	9	1
	3^ Decade	22.0	-1.3	14.4	0.1	9	-2
Capo Bellavista(*)	1^ Decade	19.7	1.7	12.9	-0.4	8	-4
	2^ Decade	20.6	2.9	14.1	-0.6	8	-2
	3^ Decade	22.0	2.6	15.3	0.4	8	7
Cagliari/ Decimomannu	1^ Decade	21.7	1.2	9.4	0.4	8	-3
	2^ Decade	23.8	0.0	10.8	0.6	8	-3
	3^ Decade	25.3	-0.3	12.0	0.9	8	1

(*)Stazioni aderenti al Programma WMO - GCOS (Global Climate Observation System)





1923