

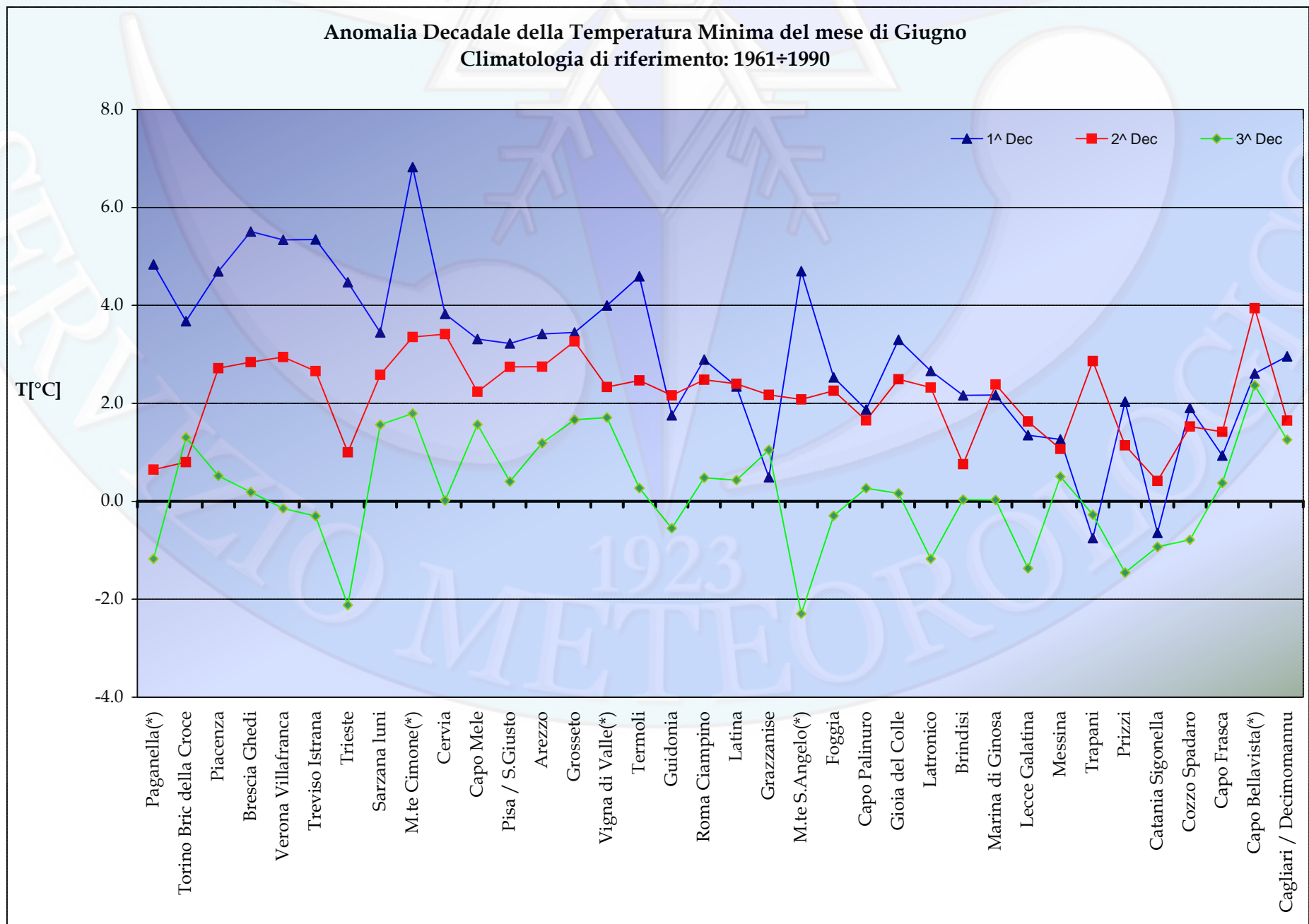
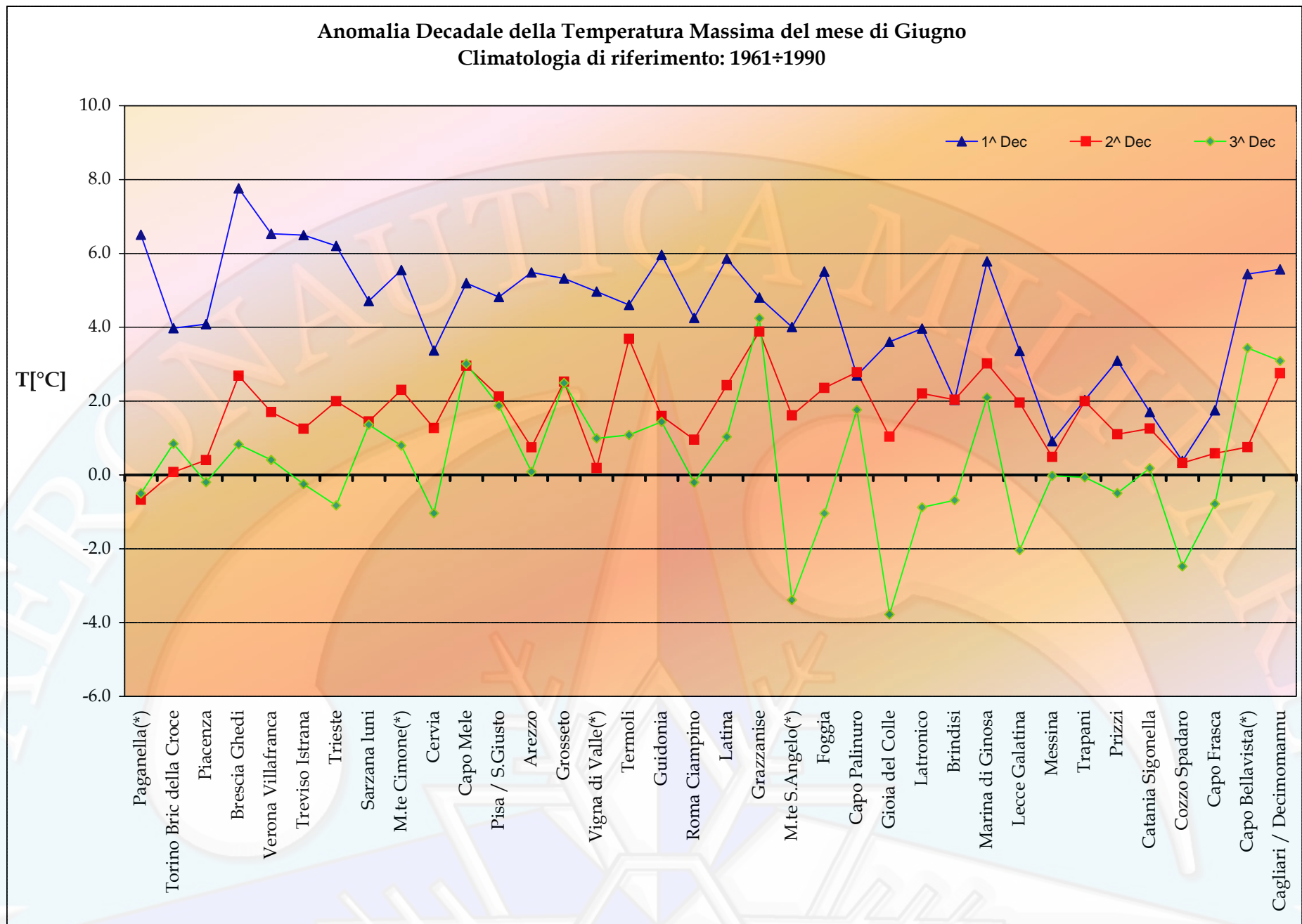
Anomalie Termico/Pluviometriche rispetto al CliNo principale 61-90**Thermo-Pluviometric anomalies vs CliNo 61-90**

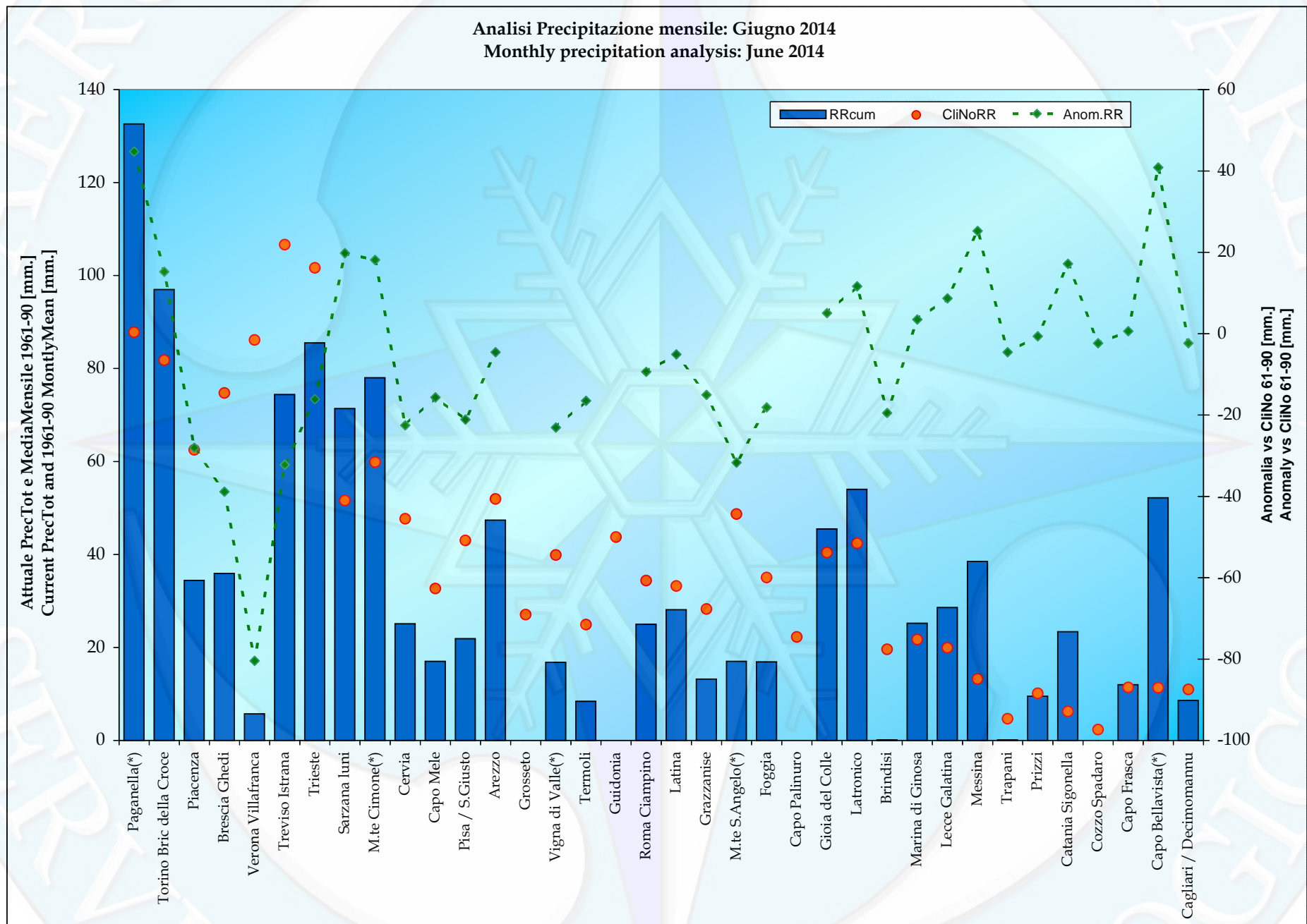
Stazioni	Giugno '15 June '15	Tmax Media Average °C Clino 61-90	Anomalia Anomaly	Tmin Media Average °C Clino 61-90	Anomalia Anomaly	Precipitazione Precipitation Clino 61-90	Anomalia Anomaly
Paganella(*)	1^ Decade	9.3	6.5	2.9	4.8	29	14
	2^ Decade	11.0	-0.7	4.0	0.6	29	22
	3^ Decade	12.7	-0.5	5.6	-1.2	29	8
Torino Bric della Croce	1^ Decade	19.9	4.0	12.2	3.7	27	16
	2^ Decade	21.3	0.1	13.4	0.8	27	27
	3^ Decade	23.2	0.8	15.1	1.3	27	-27
Piacenza	1^ Decade	24.2	4.1	11.9	4.7	21	9
	2^ Decade	25.6	0.4	13.2	2.7	21	-17
	3^ Decade	27.8	-0.2	14.8	0.5	21	-20
Brescia Ghedi	1^ Decade	24.4	7.8	13.8	5.5	25	-25
	2^ Decade	26.0	2.7	15.2	2.8	25	8
	3^ Decade	28.0	0.8	16.8	0.2	25	-22
Verona Villafranca	1^ Decade	24.6	6.5	13.7	5.3	29	-29
	2^ Decade	26.0	1.7	15.1	2.9	29	-24
	3^ Decade	28.0	0.4	16.8	-0.1	29	-28
Treviso Istrana	1^ Decade	24.7	6.5	13.8	5.3	36	-35
	2^ Decade	26.0	1.3	14.9	2.7	36	19
	3^ Decade	27.8	-0.2	16.5	-0.3	36	-16
Trieste	1^ Decade	24.1	6.2	16.4	4.5	34	-34
	2^ Decade	25.1	2.0	17.2	1.0	34	6
	3^ Decade	27.0	-0.8	18.9	-2.1	34	12
Sarzana Iuni	1^ Decade	24.2	4.7	14.3	3.4	18	8
	2^ Decade	24.8	1.4	15.0	2.6	18	-16
	3^ Decade	26.1	1.4	16.3	1.6	18	28
M.te Cimone(*)	1^ Decade	7.8	5.6	3.3	6.8	20	-15
	2^ Decade	9.3	2.3	4.6	3.4	20	18
	3^ Decade	11.7	0.8	6.8	1.8	20	15
Cervia	1^ Decade	24.9	3.4	12.7	3.8	16	-16
	2^ Decade	25.8	1.3	13.5	3.4	16	0
	3^ Decade	27.4	-1.0	15.0	0.0	16	-6
Capo Mele	1^ Decade	22.0	5.2	15.8	3.3	11	0
	2^ Decade	22.8	3.0	16.7	2.2	11	-5
	3^ Decade	24.3	3.0	18.0	1.6	11	-11
Pisa/ S.Giusto	1^ Decade	24.4	4.8	12.9	3.2	14	-13
	2^ Decade	25.5	2.1	14.0	2.7	14	-10
	3^ Decade	27.4	1.9	15.2	0.4	14	2
Arezzo	1^ Decade	24.1	5.5	10.4	3.4	17	2
	2^ Decade	25.4	0.7	11.2	2.7	17	3
	3^ Decade	27.7	0.1	12.4	1.2	17	-10
Grosseto	1^ Decade	24.9	5.3	12.6	3.4	9	n.a.
	2^ Decade	26.2	2.5	13.8	3.3	9	n.a.
	3^ Decade	28.1	2.5	15.3	1.7	9	n.a.
Vigna di Valle(*)	1^ Decade	23.7	5.0	13.8	4.0	14	-9
	2^ Decade	25.2	0.2	14.8	2.3	14	-3
	3^ Decade	27.3	1.0	16.5	1.7	14	-11
Termoli	1^ Decade	22.5	4.6	16.9	4.6	8	-8
	2^ Decade	23.6	3.7	18.1	2.5	8	-1
	3^ Decade	25.7	1.1	20.0	0.3	8	-8
Guidonia	1^ Decade	26.1	6.0	13.0	1.8	15	-7
	2^ Decade	27.5	1.6	13.8	2.2	15	n.a.
	3^ Decade	29.8	1.4	15.3	-0.6	15	n.a.
Roma Ciampino	1^ Decade	25.5	4.3	13.6	2.9	11	-10
	2^ Decade	26.8	1.0	14.5	2.5	11	0
	3^ Decade	28.7	-0.2	16.1	0.5	11	1

<i>Anomalie Termico/Pluviometriche rispetto al CliNo principale 61-90</i>							
<i>Thermo-Pluviometric anomalies vs CliNo 61-90</i>							
Stazioni	Giugno '15 June '15	Tmax Media Average °C Clino 61-90	Anomalia Anomaly	Tmin Media Average °C Clino 61-90	Anomalia Anomaly	Precipitazione Precipitation Clino 61-90	Anomalia Anomaly
Latina	1^ Decade	25.4	5.9	13.4	2.3	12	n.a.
	2^ Decade	26.6	2.4	13.9	2.4	12	-1
	3^ Decade	28.4	1.0	15.2	0.4	12	7
Grazzanise	1^ Decade	25.3	4.8	13.5	0.5	9	-4
	2^ Decade	26.3	3.9	14.6	2.2	9	-2
	3^ Decade	27.7	4.2	15.7	1.0	9	-9
M.te S. Angelo(*)	1^ Decade	19.5	4.0	12.6	4.7	15	-15
	2^ Decade	20.8	1.6	13.6	2.1	15	-1
	3^ Decade	23.0	-3.4	15.6	-2.3	15	-16
Foggia	1^ Decade	26.7	5.5	13.6	2.5	12	-11
	2^ Decade	28.2	2.4	15.0	2.3	12	5
	3^ Decade	30.4	-1.0	16.4	-0.3	12	-11
Capo Palinuro	1^ Decade	23.6	2.7	16.4	1.9	7	n.a.
	2^ Decade	24.8	2.8	17.6	1.7	7	n.a.
	3^ Decade	26.2	1.8	19.0	0.3	7	n.a.
Gioia del Colle	1^ Decade	24.3	3.6	11.9	3.3	13	-8
	2^ Decade	26.2	1.0	13.4	2.5	13	25
	3^ Decade	28.3	-3.8	14.7	0.2	13	-11
Latronico	1^ Decade	18.9	4.0	11.8	2.7	14	37
	2^ Decade	20.3	2.2	13.1	2.3	14	-12
	3^ Decade	22.6	-0.9	14.9	-1.2	14	-14
Brindisi	1^ Decade	24.5	2.0	16.2	2.2	6	-6
	2^ Decade	25.7	2.0	17.5	0.8	6	-7
	3^ Decade	27.2	-0.7	19.0	0.0	6	n.a.
Marina di Ginosa	1^ Decade	24.8	5.8	15.6	2.2	7	-5
	2^ Decade	26.8	3.0	16.7	2.4	7	13
	3^ Decade	28.0	2.1	17.8	0.0	7	-5
Lecce Galatina	1^ Decade	26.6	3.4	14.7	1.4	7	-2
	2^ Decade	28.3	2.0	16.2	1.6	7	16
	3^ Decade	30.0	-2.0	17.6	-1.4	7	-6
Messina	1^ Decade	24.7	0.9	18.4	1.3	5	-4
	2^ Decade	26.5	0.5	19.9	1.1	5	34
	3^ Decade	28.0	0.0	21.3	0.5	5	-4
Trapani	1^ Decade	25.3	2.0	15.5	-0.8	2	-2
	2^ Decade	26.8	2.0	16.6	2.9	2	-2
	3^ Decade	28.1	-0.1	17.6	-0.3	2	-1
Prizzi	1^ Decade	21.2	3.1	11.9	2.0	3	5
	2^ Decade	23.6	1.1	13.8	1.1	3	-3
	3^ Decade	25.5	-0.5	15.4	-1.5	3	-2
Catania Sigonella	1^ Decade	28.3	1.7	14.5	-0.6	2	21
	2^ Decade	30.2	1.3	16.1	0.4	2	-2
	3^ Decade	31.4	0.2	17.0	-0.9	2	-2
Cozzo Spadaro	1^ Decade	25.0	0.4	17.2	1.9	9	-1
	2^ Decade	26.3	0.3	18.6	1.5	9	-1
	3^ Decade	28.0	-2.5	19.6	-0.8	9	-1
Capo Frasca	1^ Decade	23.4	1.7	15.9	0.9	4	-4
	2^ Decade	24.2	0.6	16.9	1.4	4	8
	3^ Decade	26.1	-0.8	18.3	0.4	4	-4
Capo Bellavista(*)	1^ Decade	23.2	5.4	16.5	2.6	4	36
	2^ Decade	24.9	0.8	17.7	3.9	4	9
	3^ Decade	26.4	3.4	19.2	2.4	4	-4
Cagliari / Decimomannu	1^ Decade	26.3	5.6	13.2	3.0	4	-4
	2^ Decade	28.2	2.8	14.8	1.6	4	5
	3^ Decade	30.0	3.1	16.1	1.3	4	-3

n.a.: non disponibile per dati insufficienti nel periodo in esame. - not available for data gaps in the reporting period.

(*)Stazioni aderenti al Programma WMO - GCOS (Global Climate Observation System)





1923

SERVIZIO METEOROLOGICO