

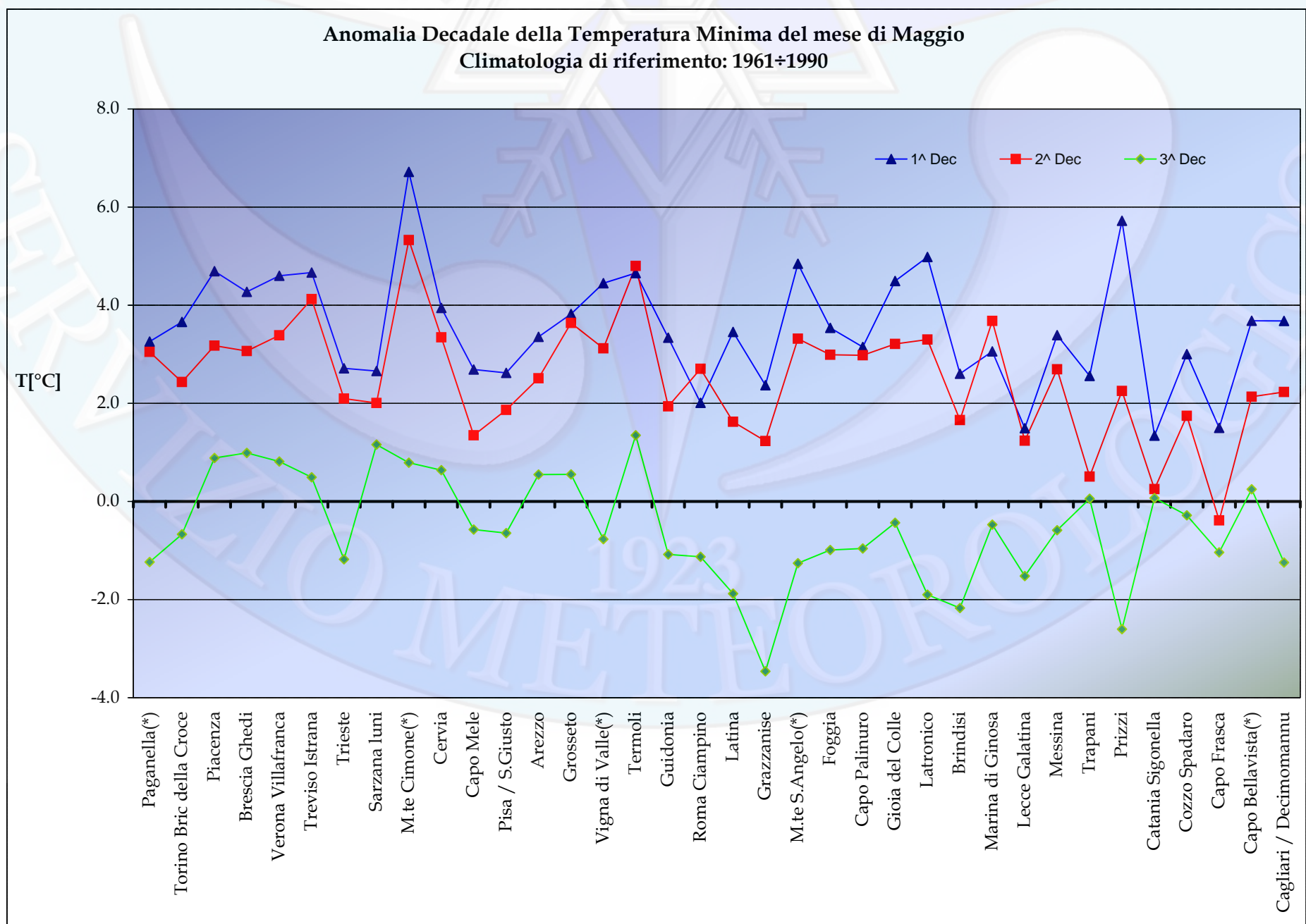
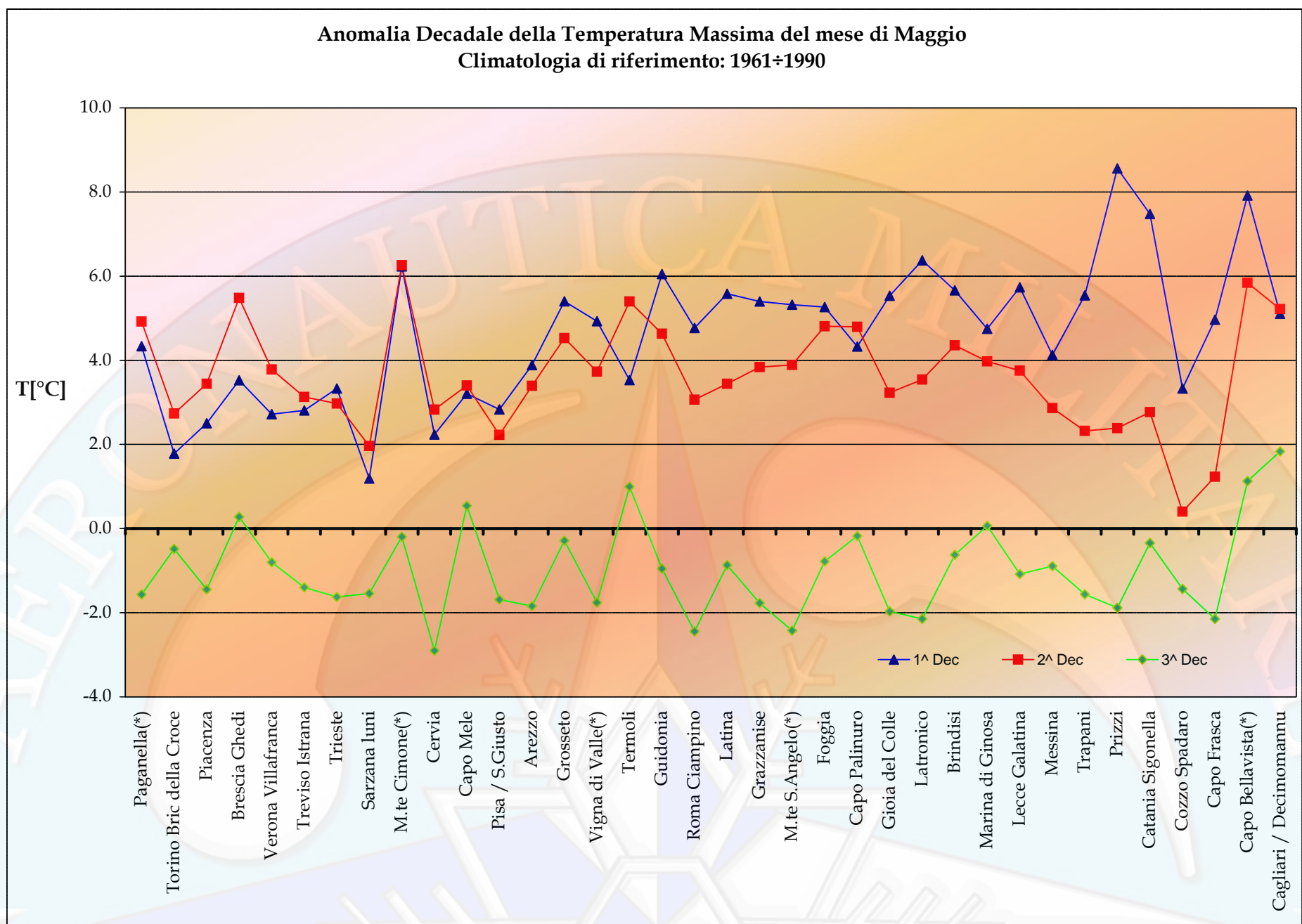
Anomalie Termico/Pluviometriche rispetto al CliNo principale 61-90**Thermo-Pluviometric anomalies vs CliNo 61-90**

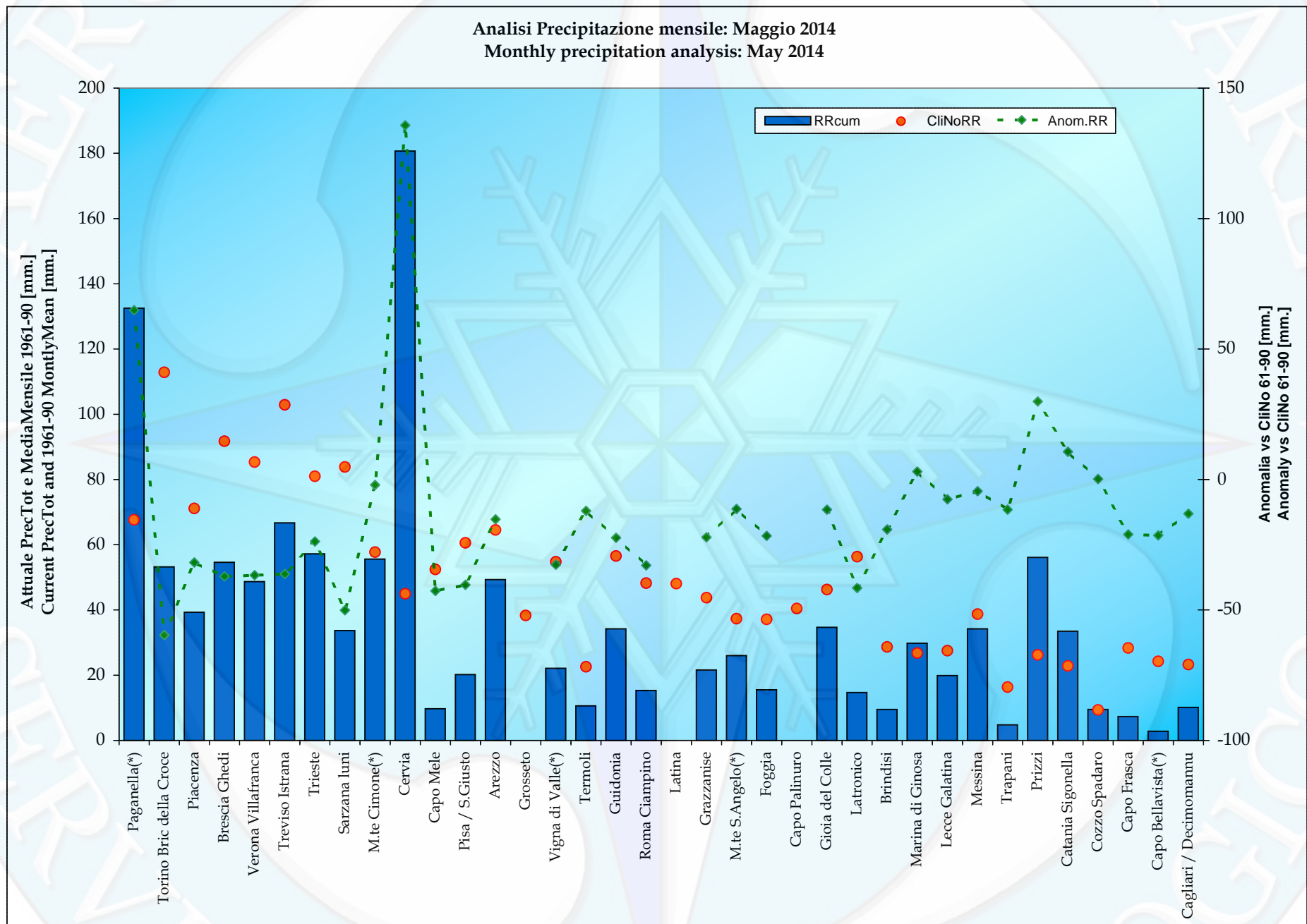
Stazioni	Maggio '15 May '15	Tmax Media Average °C Clino 61-90	Anomalia Anomaly	Tmin Media Average °C Clino 61-90	Anomalia Anomaly	Precipitazione Precipitation Clino 61-90	Anomalia Anomaly
Paganella(*)	1^ Decade	4.7	4.3	-0.5	3.3	23	4
	2^ Decade	6.6	4.9	1.0	3.1	23	72
	3^ Decade	7.7	-1.6	1.6	-1.2	23	-11
Torino Bric della Croce	1^ Decade	16.3	1.8	8.7	3.7	38	-35
	2^ Decade	17.6	2.7	10.3	2.4	38	-2
	3^ Decade	18.6	-0.5	10.8	-0.7	38	-23
Piacenza	1^ Decade	20.1	2.5	8.0	4.7	24	-19
	2^ Decade	21.6	3.4	9.7	3.2	24	-13
	3^ Decade	22.8	-1.4	10.6	0.9	24	0
Brescia Ghedi	1^ Decade	20.6	3.5	9.7	4.3	31	-26
	2^ Decade	21.9	5.5	11.6	3.1	31	0
	3^ Decade	23.2	0.3	12.5	1.0	31	-11
Verona Villafranca	1^ Decade	20.9	2.7	9.6	4.6	28	-25
	2^ Decade	22.6	3.8	11.8	3.4	28	-19
	3^ Decade	23.4	-0.8	12.6	0.8	28	8
Treviso Istrana	1^ Decade	20.8	2.8	9.6	4.7	34	-31
	2^ Decade	22.9	3.1	11.6	4.1	34	-18
	3^ Decade	23.6	-1.4	12.2	0.5	34	12
Trieste	1^ Decade	20.2	3.3	12.6	2.7	27	-7
	2^ Decade	22.2	3.0	14.4	2.1	27	-12
	3^ Decade	22.8	-1.6	15.0	-1.2	27	-5
Sarzana Iuni	1^ Decade	19.8	1.2	10.5	2.7	28	-16
	2^ Decade	21.6	2.0	11.8	2.0	28	-7
	3^ Decade	22.8	-1.5	12.8	1.2	28	-28
M.te Cimone(*)	1^ Decade	4.1	6.2	-0.1	6.7	19	-19
	2^ Decade	5.8	6.3	1.4	5.3	19	12
	3^ Decade	6.4	-0.2	2.0	0.8	19	5
Cervia	1^ Decade	20.0	2.2	9.0	3.9	15	-15
	2^ Decade	22.3	2.8	10.6	3.3	15	-12
	3^ Decade	23.4	-2.9	11.2	0.6	15	162
Capo Mele	1^ Decade	18.1	3.2	12.1	2.7	18	-17
	2^ Decade	19.6	3.4	13.6	1.3	18	-16
	3^ Decade	20.6	0.5	14.5	-0.6	18	-9
Pisa/ S.Giusto	1^ Decade	20.4	2.8	9.3	2.6	20	-19
	2^ Decade	22.2	2.2	10.7	1.9	20	-7
	3^ Decade	23.1	-1.7	11.5	-0.6	20	-14
Arezzo	1^ Decade	20.1	3.9	7.0	3.4	22	-20
	2^ Decade	21.8	3.4	8.5	2.5	22	-22
	3^ Decade	22.9	-1.8	9.0	0.5	22	26
Grosseto	1^ Decade	20.5	5.4	8.8	3.8	13	n.a.
	2^ Decade	22.3	4.5	10.3	3.6	13	n.a.
	3^ Decade	23.5	-0.3	11.4	0.6	13	n.a.
Vigna di Valle(*)	1^ Decade	19.5	4.9	9.9	4.4	19	-18
	2^ Decade	21.3	3.7	11.4	3.1	19	-18
	3^ Decade	22.5	-1.8	12.5	-0.8	19	4
Termoli	1^ Decade	19.1	3.5	13.1	4.7	8	-7
	2^ Decade	20.4	5.4	14.8	4.8	8	-7
	3^ Decade	21.4	1.0	15.6	1.3	8	2
Guidonia	1^ Decade	22.1	6.1	9.1	3.3	19	-19
	2^ Decade	23.9	4.6	10.6	1.9	19	-19
	3^ Decade	24.9	-1.0	11.5	-1.1	19	15
Roma Ciampino	1^ Decade	21.1	4.8	9.8	2.0	16	-16
	2^ Decade	23.1	3.1	11.3	2.7	16	-16
	3^ Decade	24.4	-2.4	12.3	-1.1	16	-1

<i>Anomalie Termico/Pluviometriche rispetto al CliNo principale 61-90</i>							
<i>Thermo-Pluviometric anomalies vs CliNo 61-90</i>							
Stazioni	Maggio '15 May '15	Tmax Media Average °C Clino 61-90	Anomalia Anomaly	Tmin Media Average °C Clino 61-90	Anomalia Anomaly	Precipitazione Precipitation Clino 61-90	Anomalia Anomaly
Latina	1^ Decade	21.4	5.6	9.4	3.5	16	n.a.
	2^ Decade	23.3	3.4	10.8	1.6	16	n.a.
	3^ Decade	24.6	-0.9	12.0	-1.9	16	n.a.
Grazzanise	1^ Decade	21.1	5.4	9.7	2.4	15	-10
	2^ Decade	23.0	3.8	11.1	1.2	15	-11
	3^ Decade	24.1	-1.8	12.1	-3.5	15	-1
M.te S. Angelo(*)	1^ Decade	15.4	5.3	8.9	4.8	13	-12
	2^ Decade	17.3	3.9	10.7	3.3	13	-12
	3^ Decade	18.4	-2.4	11.4	-1.3	13	13
Foggia	1^ Decade	22.2	5.3	9.7	3.5	12	-12
	2^ Decade	24.3	4.8	11.2	3.0	12	-12
	3^ Decade	25.5	-0.8	12.3	-1.0	12	3
Capo Palinuro	1^ Decade	19.7	4.3	13.0	3.1	13	n.a.
	2^ Decade	21.2	4.8	14.4	3.0	13	n.a.
	3^ Decade	22.5	-0.2	15.4	-1.0	13	n.a.
Gioia del Colle	1^ Decade	19.8	5.5	8.2	4.5	15	-15
	2^ Decade	22.0	3.2	9.8	3.2	15	1
	3^ Decade	23.5	-2.0	10.6	-0.4	15	2
Latronico	1^ Decade	15.2	6.4	8.4	5.0	19	-18
	2^ Decade	17.2	3.5	10.0	3.3	19	-19
	3^ Decade	18.1	-2.1	11.2	-1.9	19	-5
Brindisi	1^ Decade	20.5	5.7	12.2	2.6	10	-10
	2^ Decade	22.1	4.4	13.8	1.7	10	-8
	3^ Decade	23.4	-0.6	15.1	-2.2	10	-1
Marina di Ginosa	1^ Decade	20.1	4.7	11.7	3.1	9	-7
	2^ Decade	22.4	4.0	13.3	3.7	9	-7
	3^ Decade	24.0	0.1	14.5	-0.5	9	17
Lecce Galatina	1^ Decade	22.1	5.7	11.0	1.5	9	-9
	2^ Decade	24.1	3.8	12.2	1.2	9	-8
	3^ Decade	25.7	-1.1	13.8	-1.5	9	9
Messina	1^ Decade	20.8	4.1	14.7	3.4	11	-13
	2^ Decade	22.4	2.9	16.1	2.7	11	-12
	3^ Decade	23.8	-0.9	17.4	-0.6	11	20
Trapani	1^ Decade	21.5	5.5	12.1	2.6	6	-5
	2^ Decade	23.2	2.3	13.2	0.5	6	-4
	3^ Decade	24.4	-1.6	14.3	0.1	6	-2
Prizzi	1^ Decade	16.5	8.6	8.2	5.7	9	-9
	2^ Decade	18.3	2.4	9.9	2.3	9	39
	3^ Decade	20.3	-1.9	11.2	-2.6	9	0
Catania Sigonella	1^ Decade	23.4	7.5	10.0	1.3	8	0
	2^ Decade	25.4	2.8	11.6	0.3	8	17
	3^ Decade	26.9	-0.3	12.9	0.1	8	-7
Cozzo Spadaro	1^ Decade	20.8	3.3	13.6	3.0	4	-3
	2^ Decade	22.4	0.4	14.9	1.7	4	6
	3^ Decade	23.7	-1.4	16.2	-0.3	4	-3
Capo Frasca	1^ Decade	19.1	5.0	12.1	1.5	9	-9
	2^ Decade	21.0	1.2	13.4	-0.4	9	-4
	3^ Decade	22.0	-2.1	14.4	-1.0	9	-8
Capo Bellavista(*)	1^ Decade	19.7	7.9	12.9	3.7	8	-8
	2^ Decade	20.6	5.8	14.1	2.1	8	-6
	3^ Decade	22.0	1.1	15.3	0.2	8	-7
Cagliari / Decimomannu	1^ Decade	21.7	5.1	9.4	3.7	8	-8
	2^ Decade	23.8	5.2	10.8	2.2	8	-3
	3^ Decade	25.3	1.8	12.0	-1.2	8	-2

n.a.: non disponibile per dati insufficienti nel periodo in esame. - not available for data gaps in the reporting period.

(*)Stazioni aderenti al Programma WMO - GCOS (Global Climate Observation System)





1923

SERVIZIO METEOROLOGICO